

THE
Woodrack
September 2010



**PANEL
DISCUSSION**

LIW BOARD OF DIRECTORS

<i>President</i>	Mike Daum
<i>Vice President</i>	Bob Urso
<i>Secretary</i>	Steve Blakely
<i>Treasurer</i>	Mike Luciano
<i>Trustees</i>	Joe Pascucci
	Jim Macallum
<i>Membership</i>	Joe Bottigliere
<i>Newsletter Editor</i>	Daryl Rosenblatt
<i>Web Site</i>	Sanjay Kapur
<i>Show Chairs</i>	Greg Nicharico
	Roger Schroeder

<i>Librarian / Video Library</i>	Steve Gazes
<i>Raffles</i>	Ed Schnepf
<i>Refreshments</i>	Jean Piotrowski
	Charlie Felsen
<i>Video</i>	Karl Blessing
<i>Photographer</i>	Jim Macallum
<i>Food critic</i>	Charlie James

THIS MONTH:

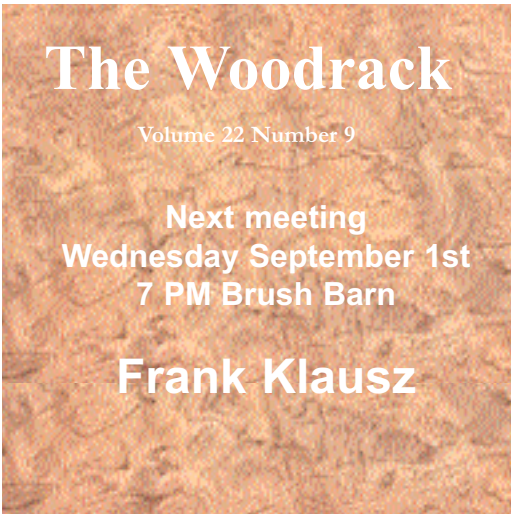
- PRESIDENT'S MESSAGE**
- SECRETARY'S NOTES**
- SHOW BIZ**

- SIG NEWS & PHOTOS**
- Turner's Guild**
- L.I.S.A.**
- SSOW**

- ARTICLES**
- Basic Bandsaw Maintenance**

EXHIBIT FORM FOR THE SHOW

CLUB HOTLINE
(631) 656-5423



President's Message

Mike Daum



The next two general meetings will feature presentations from two of woodworking's finest craftsmen, Frank Klausz (September 1st), and Allan Breed (October 6th). Anyone who has been a part of our group for at least the past year should already know Frank, who has been regularly visiting us from Pluckemin NJ for several years now and has invited us numerous times to visit his shop. Frank always has something new to share with us (remember last years' mortise and tenon-cutting visible behind glass - oh yeah!) and this visit will not disappoint either. We are fortunate that Frank is still willing to travel out to see us, and we should not take this for granted. A typical packed attendance at the Brush Barn during his visit will show our appreciation.

Allan Breed runs The Breed School, a woodworking school in South Berwick, Maine that specializes in 18th century furniture making by hand, which encompasses nearly every aspect of woodworking. Carving, cabinetmaking, turning, scrolling, marquetry - all may be incorporated in any one piece in the 18th century tradition. Routers and other power tools are not off limits, but proficiency with hand tools is encouraged. Allan will present various aspects of this tradition, which as we will learn, is quite relevant to methods useful even in our own more modern projects. Allan will visit us on Wednesday October 6th, and depending on the commitment to attendance at that time, may stay with us the rest of the week doing workshops at members' shops and a Saturday/Sunday workshop at the Brush Barn. I highly recommend visiting Allan's website www.allanbreed.com and listen to the audio slideshow of Allan's work. Several of our members have attended classes with Allan and thoroughly enjoyed what they were taught. I hope you are looking forward to seeing these masters in action as much as I am!





Secretary's Report

Steve Blakley

At 7:06 PM President Mike Daum asked the membership to settle down and get their raffle tickets so we could get the meeting started.

Mike thanked the membership for attending the meeting on such a warm evening. Luckily the air conditioning was somewhat working because it was hot both outside and inside the barn. Mike reported that tonight's topic would be a panel discussion on any woodworking topic.

The business part of the meeting comes first and we had one new visitor, Mike Extrum who has been doing woodworking on and off for some years. (It later turned out that Mike E. also needed help with a chair leg spreader. Mike D. suggested that anyone who wanted to help Mike E. out, to see him during the meeting.)

Mike D. also reminded everyone that name badges need to be worn. If you do not have a name badge, use a temporary nametag sticker and at the end of the meeting leave it in the box. At the next meeting, there will be a name badge for you. He also asked if everyone got his or her copy of the Woodrack...there seemed to be no problems with this.

Mike D. informed us that Mather hospital asked him to help guide them on taking a maple tree down. Apparently, three arborists said the tree was bad and had to come down. The tree is now down and behind a Mather Hospital parking lot. The trunk of the maple tree is about 9-10 feet in diameter, and it was about 150 years old. There was very little damage found when the tree was removed. Mather Hospital said that anyone wanting any part of it for woodworking is welcome to it. If we did make something out of the tree, Mather Hospital reported that we could have FRONT LOBBY space in the hospital for a display of our projects and if we wanted to we could sell these projects with Mather taking a 15% cut. Some sculptors have already claimed parts of the tree and they are identified with markings. For more information, see Mike Daum.

Meanwhile, the Ward Melville Heratige Foundation spruce tree was taken down also and was found NOT to be the kind of tree the LIW membership could use.

continued on page 4

Show Biz

*Roger Schroeder &
Greg Nicharico*



Our third and likely final meeting with Jim McKenna, Director of Old Bethpage Village Restoration (OBVR), venue for this year's show and exhibition, produced a contract, finalized the admissions prices, and provided perks to set-up volunteers and demonstrators. Elated, we came very close to popping the cork from a magnum of champagne.

If you haven't heard about the show, here's the scoop. The fifteenth annual Long Island Woodworkers Show will be held November 13 and 14 at OBVR. It will be our second year exhibiting in a newly constructed building with some 9000 square feet of floor space. At a cost to our club of \$300 per day, we can't help but think of what the Godfather might have said: This is a deal we can't refuse.

To make the show successful, we need volunteers, a good attendance and, most importantly, projects to exhibit. With just two months to show time, we urge you to have a piece of furniture, a bowl, a carving, a scrolled picture ready for display. The only restriction is that you not enter a piece that was brought to the show last year. Someone asked us if he could enter a project done in an industrial arts class in 1972. No problem! But we're sure you have more recent masterpieces that will wow the public and fellow woodworkers.

A set-up crew is needed to help organize the building on Friday, November 12. For the two days of the show, demonstrators are a must. Care to scroll for a day? Turn a bowl? Create a piece of intarsia? Make toys for kids? Carve funny figures? We'll have a spot for you. Sign-up sheets will be available at club meetings, and jobs are going to be plentiful. As a reward, the set-up crew and demonstrators will receive a pass for both days to enter the show for free. In addition, all LIWC members will be able to bring in family and friends for only \$5 (for children 5 to 12 the cost is \$4; kids under 5 are free). That's half the price of regular admission! And if you can't give some time to the event, your entrance ticket is just \$5.

Our wives have already started contacting family and friends, even clergy, to attend the event. If our club is going to return to OBVR on a yearly basis, we need to prove that we can bring folks into the show. We can't guarantee everyone will have a really fabulous time, but attendees will have the opportunity to share our passion for wood and creativity.



continued from page 3

Mike D. asked for a Membership and Treasurers report. Joe Bottigliere reported that we now have 227 paid members. Mike Luciano reported that we were in “good shape” and recently subsidized the marquetry workshop to the tune of about \$500.00 and that we have paid all rents through September.

Mike D. (along with the rest of the club) thanked Charlie James for setting up the Marquetry workshop.

Mike D. reported that in **upcoming meetings** Frank Klausz would be here in **September** showing us how to prepare and glue up projects and miter edges around plywood; Alan Breed who does 18th century furniture productions will be here in **October** and show us how to carve a ball and claw foot on Wednesday night. On Thursday and Friday during the day and evening, Alan would visit local member's shops and show more woodworking. There would also be a Saturday workshop with Alan. Participation in the various members' shops will be extremely limited. Costs per session are yet to be established and Mike D. is in communication to work out the financial details with Alan. In **November** Delta-Porta Cable will be here showing us some of their new projects.

Daryl Rosenblatt asked if anyone would be interested in putting together an index of the past Woodracks. If you are, see Daryl or email him with your interest.

Charlie Felson asked if anyone received an email on the AAW (American Association of Woodturners) and if they understood what the email was about. Melissa Bishop reported (the following taken directly from her post on the website) “Last night at the general meeting I discussed the battle ensuing within AAW for board seats. Here is the website where you can give the board your proxy to allow the President to vote on your behalf. <http://www.supporttheaaw.com>. If you are a current member of American Association of Woodturners it is critical that you fill out your proxy. Otherwise, the 5% of members who initiated this fight could win & destroy the organization. Please also read the letter from David Ellsworth for historic information. He is member number 1 and was part of the founders group.”

Bob Urso reported that there were some pictures of old LIW shows and that anyone who might have had a project in the pictures are welcome to take them.

One of the members brought up the issue of toys for tots and mentioned an article that stated the court system said that if the manufacturing companies do the testing for lead in its projects, the end user does not have to do the testing and it is thus con-

sidered safe.

Charlie J. reported that Roger Schroeder has a friend that has a big piece of holly. Taken directly from the web site; “I spoke to Roger about the holly log that his friend is giving away. It weighs about 150 LBS and is 14” D X 54” L. It must be removed from Oakdale by the beginning of September. I really don't need any but if you have a truck and are willing to transport it, there are a few members that would like to share it. Talk to Roger tomorrow night...Charlie”.

Howard Whitma has a right tilt Unisaw for sale. Call Howard at (516) 805-9651 if you are interested.

For Show and Tell, Melissa Bishop showed three pieces she turned, one a very nice bowl for her son with jeweled stones placed on the outside. Ace Roman went on a trip to Nova Scotia and showed a spoke shave and a concave scraper that he picked up. Dan Jackson showed some real nice curved archway moldings he made. They were made of 40 laminations of 1/16” thick wood. As always, Dan's description of how he made the pieces was very entertaining. Rich Weil showed some pictures of an F14 and the mock up which was made of wood. The mock up was over 62 feet long. Frank Napoli showed his gargoyle cane made of Corian and mahogany.

Mike D. then asked the SIG's to report: The Long Island Cabinetmakers will have Jim Brown give a presentation on shop safety and tuning up a table saw; the Long Island Guild of Woodturners will decide on their topic shortly; the Secret Society of Woodcarvers will work on the spoons they started last month and encourages everyone to bring in their COMPLETED snowmen. The Long Island Scrollsaw Association will be finishing up their chess pieces.

Mike D. then spoke about the LIW Show and that there were only 11 members who have submitted exhibit forms. If more exhibit forms are not received next month we will have to reevaluate having a show. Roger Schroeder and Greg Nicharico reported that there will be a Show meeting on August 11th at the New Village Recreation Center on Wireless Road. Both are concerned that they don't have enough volunteers for the show and the lack of vendors committed as of this date. Mike D. encouraged everyone to volunteer for some kind of position.

The raffle was held and three nice prizes were awarded.

It was then time to bring up members who would answer questions from the audience. On the panel were Pete Profeta, who is an expert in repairs of hand tools; Charlie James, an accom-

continued on page 9



Turners' Guild

Jean Piotrowski



Secret Society of Woodcarvers

Steve Blakley

The August meeting of the Guild of LI WoodTurners was held on Thursday, August 12th. The meeting was called to order by President Bob Urso at 7:15 pm.

There was no old business discussed. New business included an update from Frank Kiefer on our group becoming a member of the American Association of Woodturners. He has obtained all of the necessary paperwork and is completing the applications. He reported that we should be an official chapter within the next few weeks.

Several members brought in some beautiful pieces for Show & Tell. Hal Usher had a collection of bowls turned from Norway Maple Burl. He discussed some of the different types of Maple and his finishing techniques. He gets a beautiful finish by sanding to 320 grit and finishing with steel wool.

After 14 months, Melissa Bishop is back at her lathe. She showed a maple bowl, embellished with peridot stones that she will be presenting to her son for his birthday. She also turned 3 pieces from wood obtained from John Jordan, a well known wood turner, from a tree that was cut down on his property. He distributed about 150 pieces of wood to interested turners as part of a program called "Voice of the Beloved Tree". Melissa's bowls were all unique, one was dyed orange with an alcohol dye to enhance the grain.

Rick Usher showed a cedar pot with the most beautiful red color that he finished with spray lacquer to help maintain the color. Cedar is a very difficult wood to turn. He also had a box elder plate and a Katalpa wood bowl.

Gary Mayhew presented a segmented vessel made from Bubinga, Bloodwood, Maple and Wenge with a feature ring of over 500 pieces. It was finished with 10 coats of Formby's High Gloss Tung Oil Finish.

Charlie Felson, Ed Piotrowski and Doug Bartow, other-

On July 28, 2010 President Ed Piotrowski opened the meeting by welcoming everyone who attended. He encouraged everyone to purchase raffle tickets and then asked Steve Blakley for a Membership and a Donation report which was given and accepted.

Two potential members visited our club tonight and it is our pleasure to welcome Iris Zimmerman and Adam Fisher. We hope you enjoyed yourselves as well as the company and consider becoming part of our Secret Society!

Steve asked if there were any subjects that the membership would like to address in our 2011 program. One suggestion was that we have someone give a demonstration on air brushing. Another suggestion was that we leave more "open dates" for people to do whatever project they are working on. There was also a suggestion that we continue to have simple projects that everyone likes, for example the spoon and the pumpkin, which we made last year. The Executive Board will work on this and report as soon as possible.

The donations were collected and the proceeds went to the refreshments for the night.

Bob Urso announced he was NOT going to suggest a new club name. The crowd was speechless!

For Show and Tell, John Hons and Richie Zimmerman showed the "leaf" spoons they were working on. Frank Napoli showed some of his egg faces and Roger Schroeder showed another beautiful eagle we just completed.

Frank N. then began showing and assisting the members in the making of the night's project, a wooden spoon.

If you missed this month you can always catch up next month so do not be disappointed.



continued on page 6

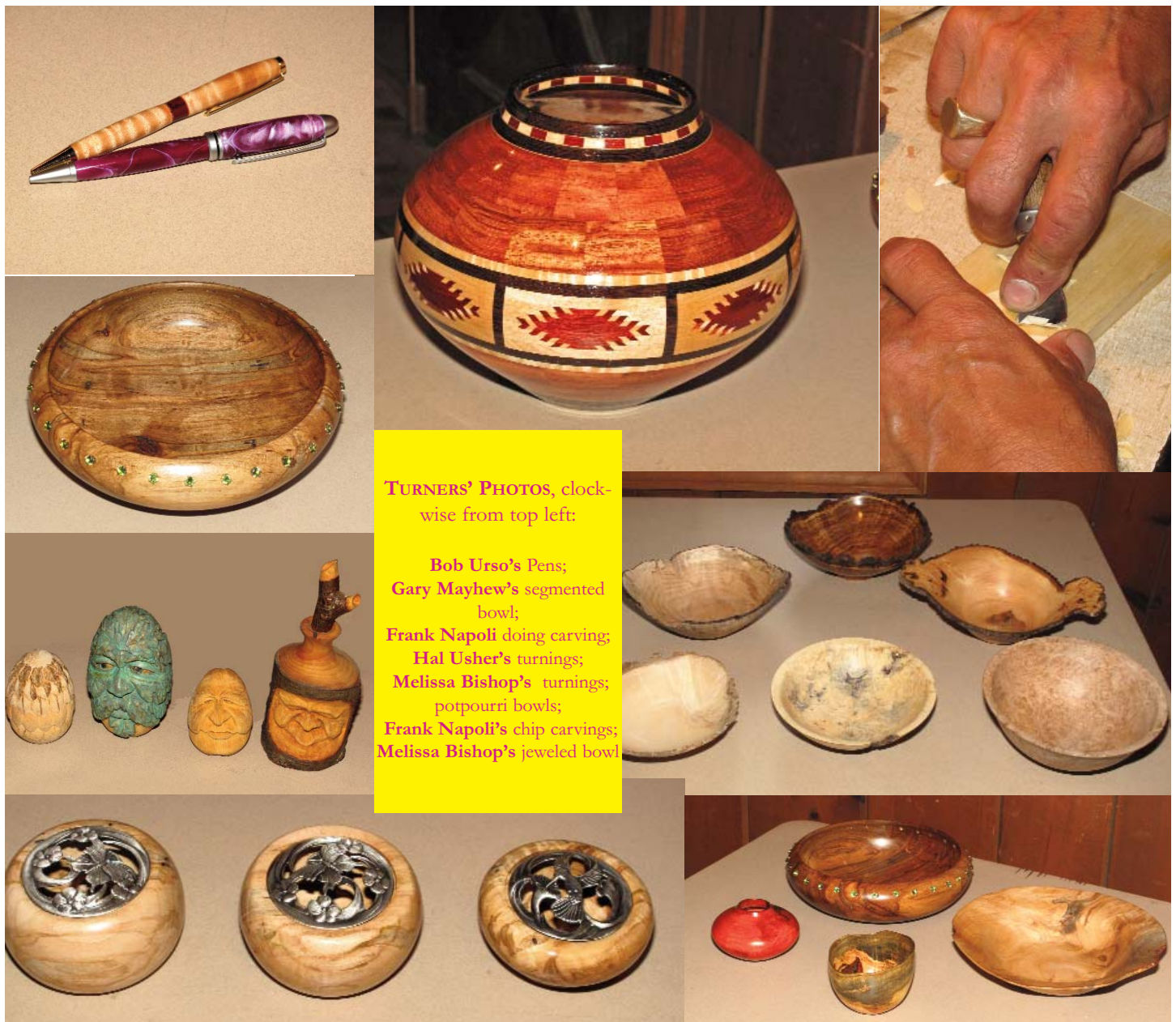
wise known as the “illegal sig”, showed their Potpourri Bowls with metal insert lids. They were all turned from a piece of Ambrosia Maple.

And then there was Rich Zimmerman with his “never give up bowl” made from the branch of a neighbors tree. She requested it as a remembrance of a favorite tree. Well Rich created something she’ll never forget. The piece blew apart on the lathe several times, but Rich used every glue product in his shop to hold it together. The work in progress is a lovely wood welded misshapen bowl. I can’t wait to see the final piece.

The guest speaker for the evening was Frank Napoli who is doing a 2 part series on carving your turnings. He began by showing us some of his carvings and the aspects of carving that could be incorporated in turning. One type of carving is Chip Carving which can be done on the rim of a bowl or plate. Frank demonstrated chip carving leaves on the rim of a bowl.

He discussed the different tools you might need to get started, a Chip Knife, a Detail Knife, a Shallow Sweep Gouge and/or a V Gouge. He also discussed the difference of sharpening a carving tool as opposed to a turning tool.

Tonights demonstration was informative and it was a pleasure to watch Frank work. He is truly a talented artist and all of his work is spectacular.



TURNERS' PHOTOS, clock-wise from top left:

- Bob Urso's Pens;**
- Gary Mayhew's segmented bowl;**
- Frank Napoli doing carving;**
- Hal Usher's turnings;**
- Melissa Bishop's turnings;**
- potpourri bowls;**
- Frank Napoli's chip carvings;**
- Melissa Bishop's jeweled bowl**



Cabinetmakers SIG

Stephen Price

The LIC met on **TUESDAY, JULY 13**. The meeting was delayed 30 minutes because no one had brought a key to the American Legion Hall. Bob Urso saved the day when he arrived at 7:30 with a key, although it was not his responsibility to open the building. The issue will be resolved at the next Board meeting which will be just before the next LIC meeting on August 10. The Board will also discuss the agenda for future meetings at that time. There were 17 members present. One new member, Bill Hawkins, was introduced.

SHOW and TELL: Jim Brown showed pictures and discussed a cabinet and shelf unit he had built. This consisted of two lower cabinets connected by a desk top and an upper shelf unit that rested on top of the desk top. Of particular interest was his use of MDD. This a sheet goods product made up of exterior-grade plywood with dense paper-based outer layers. He prefers this over MDF. He also used Domino joinery. Susan and Jim Hennefield are making a table. Susan showed a walnut bowl she had turned several years ago. Larry Schwartz showed pictures of a Snake Cage. His son, who currently lives at home, has a 9' albino Boa Constrictor and asked Larry to make a secure cage for it. The requirements were that it be removable, water resistant, with access to the inside. He made it in two pieces which were then bolted together. It was made with 3/4" exterior plywood covered with bark. It was finished with three coats of wipe-on polyurethane, sanded with 320 grit paper. Joints were sealed with silicone. He also showed a mortising jig.

ROUND ROBIN: MATT STERN discussed shop safety. He stressed eye protection and the need to always be aware of where your fingers are (in relation to the blade or cutter). He gave a frightening example of using a nailer. The nail hit a knot in the work piece and was diverted into his finger, also damaging his ring. Norman Bald showed a piece of plywood that kicked back from a table saw, hitting him in the abdomen. The work piece

showed the tell-tale sign of kickback, a rough semi-circular scar. BARRY SALTSBERG added that a router table could also present dangers, particularly a hand being pulled into the cutter. With a table saw, the importance of staying out of the path of the blade &/or kickback and of using sharp tools was emphasized. NORMAN BALD showed a mortising/joinery jig he had made several years ago. He uses it with a router. The current issue of Shop Notes has plans for a very similar jig. Jim Brown showed wooden clamps to be used on a tapering jig. They were meant to replace aluminum ones which might cause problems if they hit the saw blade. BEN NAWRATH showed his Oneida Dust Deputy, with many modifications he had made. He uses it when he hand sands.

The next meeting will be on Tuesday, August 10. Jim Brown will discuss table saw tune-ups and safety.

Several members recommended QUALITY SAW AND KNIFE for its excellent sharpening service. They are located at 115 Otis Street, West Babylon, NY 11704. Tel. (631) 491-4747..

The LIC met on **AUGUST 10, 2010**. The meeting was conducted by Barry Saltsberg. Two new members were introduced, Joe and Jim Riordan. The treasurer reported that we have money. Bob Urso reported on a new table saw alignment gauge from WoodPecker. It is very simple to use and very accurate. The main presentation, Table Saw Maintenance, Tuneup and Safety, was given by Jim Brown. A tune-up saw gives a cleaner cut, requires less power, fewer burn marks and helps avoid kickbacks. If the saw blade is not aligned properly, it can result in sawdust being thrown back in your face and well as kickback. Cabinet Saw vs. Contractor Saw: In a Contractor's saw, the saw mechanism is attached directly to the top of the saw which makes it difficult to adjust,, A cabinet saw, on the other hand, has the saw mechanism attached directly to the cabinet which is a more stable arrangement. Less expensive saws generally have table tops made of grey cast iron which is brittle and prone to crack or break. More expensive saws generally use malleable cast iron which is much more resistant to cracks and breaking. Jim recommended having a good steel straight edge,

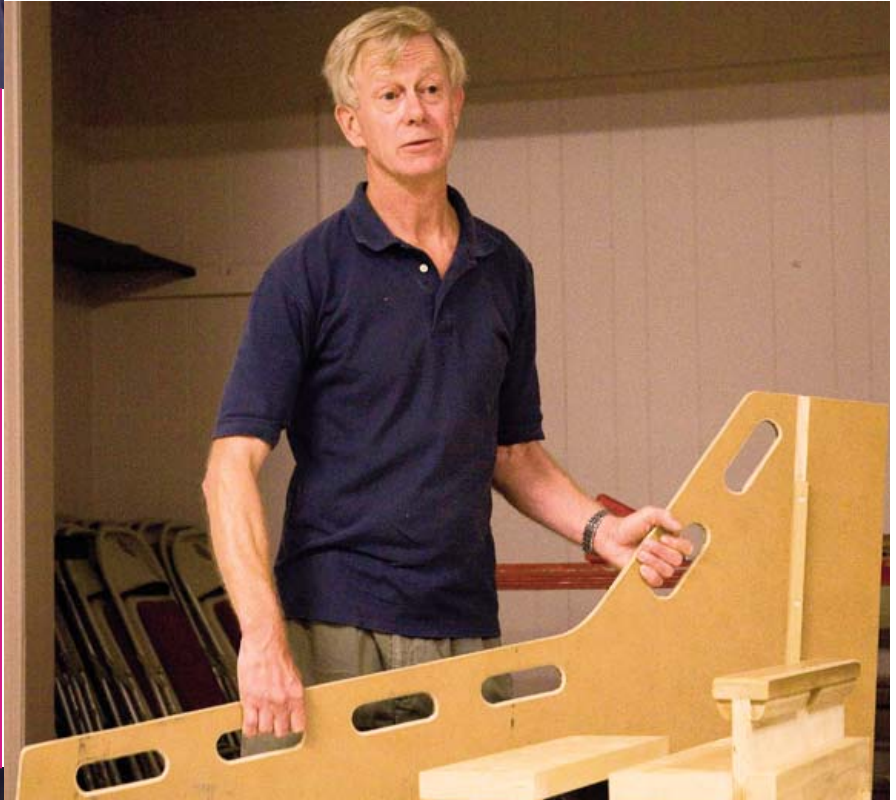
continued on page 8, left column



**PHOTOS FROM THE
CABINMAKERS' SIG:**

Clockwise from top left:

Jim Brown;
Joe & Jim Riordan;
Shop made sliding table;
Norman Bald;
Zero clearance table saw insert.

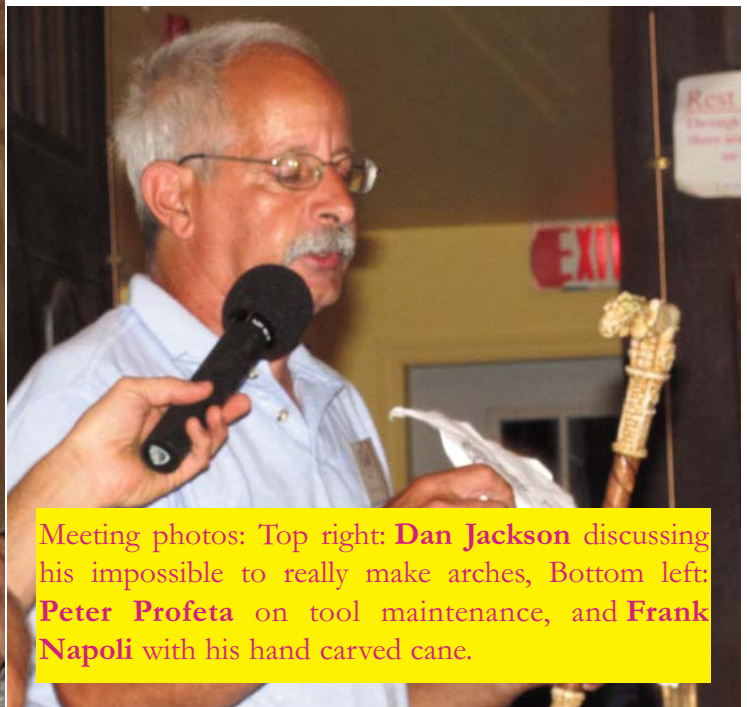


Cabinetmaker's Minutes

such as the one made by Veritas (Lee Valley) for such tasks as checking the flatness of the table and table wings and the flatness of the rip fence. **Aligning Table Saw Blade:** The blade should be parallel to the mitre gauge slot. The blade should be checked at 90 and 45 degrees. If out of alignment, the blade could be dangerous to use. (Norman Bald mentioned small plastic plugs which helped remove "slop" from the mitre gauge.) A dial indicator and a vernier caliper are useful tools in aligning the saw blade. Jim recommended Ridge Saw Blades which had almost no runout. **Crosscutting:** The mitre gauge that comes as basis equipment on table saws is rarely very precise and usually has "slop" in its fit in the mitre slot. The Inkra (Woodpeckers) mitre gauges are very accurate. Zero-clearance throat plates are a must for accurate cross cutting. It is also useful to keep extra mitre bars on hand for use in jigs, etc. He advises against putting sandpaper on the mitre gauge fence because it can dull the blade and scratch the table surface. The one exception is when when making angle cuts, to keep the workpiece from sliding. He recommends using universal clamps (available from Rockler and others to hold sacrificial fences against the rip fence. **Accessories:** He strongly recommends the use of a sliding mitre gauge for duplicating angles. This saves time and eliminates the need for calculations. He also recommended the use of



dado shims, especially ones which note their exact thickness. In this way the exact number and size of shims can be determined by the difference between the thickness of the dado stack and the thickness of the work piece. **Push sticks:** These should always be run against the rip fence. Jim makes him out of plywood with a replaceable bottom. He feels they should always be made out of wood.. This was a particularly informative and useful presentation. Jim did a masterful job.



Meeting photos: Top right: **Dan Jackson** discussing his impossible to really make arches, Bottom left: **Peter Profeta** on tool maintenance, and **Frank Napoli** with his hand carved cane.

Meeting Minutes

plished furniture maker; Richie Zimmerman, a turner and excellent scroll saw artist and Steve Fulguni, a well-respected wood turner. The following are some of the questions and answers that were covered.

Q. Is it worth rebuilding a battery pack for an 14.4 volt Dewalt?

A. Yes, as there are places on the internet that will rebuild them for as little as \$35.00, although sometimes it is better to wait for a sale instead of repairing.

Q. What if you are not sure if the charge is no longer working as designed?

A. Ace hardware (in Wantagh) will test the charger to see if it is good or not, or you can send it back to the manufacturer.

Q. What kind of lubrication would you use for the raising mechanism of a contractor saw?

A. T9 Boeshield, as it does not gum up or attract sawdust, OR Porter Cable makes a paraffin wax, OR mineral spirits to clean the undercarriage. Remember that Teflon finishes are ok but silicones are not.

Q. I am refurbishing an old table saw top that is rusted and I want to take the rust off. What do you recommend?

A. Remove the table, place it in a large bucket and use the electrolysis method, OR White vinegar on small spots OR WD 40 followed by 4/0 steel wool.

Q. Can you use a different brand name battery on another tool if the voltage is the same?

A. Most likely not because the battery clips are different from brand to brand.

Q. What is the best type of batteries to purchase?

A. Lithium ion batteries.

Q. I have a Jet 14" 1 horse power Band Saw. Can I put a riser block on it?

A. Yes.

Q. If you were going to buy a battery-operated sawzall, which brand would you recommend?

A. Dewalt because there is a good warrantee on the battery...and just for your information, open a Festool drill and a Milwaukee drill, pull motor out and you will find that they are from the same manufacturer with the same part numbers.

Q. What is the best way to get rid of old glue on an Ethan Allen piece of furniture?

A. Warm water OR scrape it off OR a heat gun OR heated water with an equal amount of vinegar in it.

Q. A limb came off a tree, what is the best way to treat the part left on the tree?

A. (There were two completely different approaches to this) 1) Home Depot sells a limb sealer, maybe called "Tree Wound". 2) Not to put any wound sealer on it and it would grow around the damaged part. It was agreed though that if there was danger of water getting into the tree then the water should somehow be averted. If you call the Brooklyn Botanical Gardens, they are always willing to help with these type of questions.

Q. What medium priced scroll saw is a good one to get?

A. While everyone has an opinion on each scroll saw it was generally agreed to get the best saw your budget could handle.

Q. Which pneumatic tool brand is best?

A. For construction, the Hitachi mint green tools. Repairing and rebuilding kits are less expensive than other brands.

This was a great learning session and we thank the panel members for their input!

On September 13, 2010 the LIW Executive Board will hold their meeting at the New Village Recreation Center, 20 Wireless Road, Centereach NY, at 7PM.

Agenda Items for September 2010 LIW Executive Board Meeting

- 1) Report on the status of the 501(C)3 issue
- 2) Report on the status of the LIW NY State Tax situation
- 3) All open action items
- 4) Website Update Problems (Back up for Sanjay)
- 5) Website software (RColes wants to know why we are not using the most updated software.)
- 6) Club patch or window sticker (Do we want to pursue this?)



Basic Bandsaw Maintenance

Mike Daum

I invited Corey Tighe to visit my home shop recently, as summer ends and he heads back to classes at SUNY Morrisville for the Wood Products Technology program in which he is enrolled. Corey, as you may know, is one of our youngest members, and is determined to make a career from woodworking. With great encouragement from his family, I am certain he will succeed.

I gave Corey a tour of the shop, and showed him a Craftsman 14" band saw that I lamented to having left out in the rain more than a few times - OK, more like a year. Here's the reason. I had lent the band saw to a friend and he called me up one day to tell me that it was in bad shape and would need a lot of work to repair it. When I offered for him to keep it and invest in the parts, he declined with a chuckle and therefore it ended up back at my shop. Many times I wanted to drag it out with the trash, yet for some reason (laziness, perhaps) I kept it.

With some encouragement from Corey, we decided to plug in the band saw to see what would happen. "OK Corey, stand back", I said. "I'm not sure what will happen next." I expected it wouldn't start of course, yet when I threw the switch - it fired right up! The blade was



all rusted, but a test piece into the blade cleared off the surface rust quickly. I don't know why my friend condemned the saw, as the test piece cut just fine. The bearings moved fine, the blade was tracking perfectly, and there was no vibration from the pulleys. We started and stopped the saw a few times more, then decided to take off the wheel covers to inspect the tires. It was very clean inside (undoubtedly from months of rain clearing the sawdust). In the bottom left corner, there was a familiar sight - a mouse nest. This is not the first time I've found evidence of critters in this bandsaw. A few years ago we had a bandsaw symposium at the Brush Barn, where an empty nest was also discovered in a similar fashion.

The only difference here was the MOUSE we found sleeping within a fraction of an inch of the spinning wheel! Corey and I were incredulous! We shut down the saw. "No way", Corey kept saying. "He must be dead". "No, he's breathing", I told him. Since Corey had his camera with him, we just had to document this. "No one would believe us", he said. Still unsure of his physical state, I readied a bucket and found a stick to nudge the fur-ball. "Maybe he got hit by the wheel and is unconscious", I thought. No evidence of blood though, and he would surely be bleeding if he got in the way of the spinning saw.

I gently prodded the little guy - saw his whiskers shake a second, then two jet black beady eyes opened. With lightning speed, the mouse searched all about for an exit, but ultimately found his way into the bottom of the bucket. "He's fine", we determined. To be able to sleep through the operation of the machine, I can only surmise that either the mouse was comforted by the fanning effect of the wheel spinning (it was a hot day), or the slight vibration of the running saw put him in a trance. Who am I kidding? This mouse was probably sleeping off a long night of partying.





WOODWORKING SHOW 2010 APPLICATION TO EXHIBIT

Only ONE project per CATEGORY per member will be eligible to be judged.

NAME	TOWN	Location	Size	For Sale?
Category (Choose a letter from list below)	Year Made _____ Type of _____ Finish _____	<input type="checkbox"/> Wall <input type="checkbox"/> Table <input type="checkbox"/> Floor <input type="checkbox"/> Platform	<input type="checkbox"/> Width _____ <input type="checkbox"/> Length _____ <input type="checkbox"/> Height _____ <input type="checkbox"/> Diameter _____	<input type="checkbox"/> Yes Price _____ <input type="checkbox"/> No
Project Name _____	Own Design? Y N			
Materials _____				
Category (Choose a letter from list below)	Year Made _____ Type of _____ Finish _____	<input type="checkbox"/> Wall <input type="checkbox"/> Table <input type="checkbox"/> Floor <input type="checkbox"/> Platform	<input type="checkbox"/> Width _____ <input type="checkbox"/> Length _____ <input type="checkbox"/> Height _____ <input type="checkbox"/> Diameter _____	<input type="checkbox"/> Yes Price _____ <input type="checkbox"/> No
Project Name _____	Own Design? Y N			
Materials _____				
Category (Choose a letter from list below)	Year Made _____ Type of _____ Finish _____	<input type="checkbox"/> Wall <input type="checkbox"/> Table <input type="checkbox"/> Floor <input type="checkbox"/> Platform	<input type="checkbox"/> Width _____ <input type="checkbox"/> Length _____ <input type="checkbox"/> Height _____ <input type="checkbox"/> Diameter _____	<input type="checkbox"/> Yes Price _____ <input type="checkbox"/> No
Project Name _____	Own Design? Y N			
Materials _____				

<p>CATEGORIES: Furniture 1: Beds and Tables (Without Drawers) Furniture 2: Desks and Casework/Cabinetry Furniture 3: Chairs Turning Toys/Crafts/Games/Models: includes miniatures Accessories: Projects that do not fit into "E" Scrollwork Intarsia/Marquetry/Inlay Novice: New to woodworking, never exhibited before Carving Unique: Any project not fitting into another category (e.g. boats, instruments, etc)</p>	<p>Fill out as many applications as needed. <u>Photos and drawings</u> are very helpful for the exhibit layout and can be attached to the sheet.</p> <p>*If items are for sale, they must be registered with the WOODSHOP GALLERY prior to the show.</p> <ul style="list-style-type: none"> All projects MUST arrive on the Friday before the show for photographing and registering. All Projects MUST remain in the exhibit area until 5 PM Sunday. <p>MAIL TO: Mike Daum, 4 Pam Court, South Setauket, NY 11720</p>
---	---

The Marketplace

4/4 Spalted Beech lumber for sale. Most 9" and wider 8' long, with great figure. http://www.righteouswoods.net/Beech_European_Spalted.html is selling it for \$14.20 a board foot, I am asking \$7 a bf for quantities less than 50 bf, \$5.50 for quantities over.

Powermatic 719A Hollow Chisel Mortiser with 4 chisels and mobile base. Great condition, works like a champ. Asking \$595, about \$950 for all this new, save money and get a great tool.

Bill at wmarr@optonline.net, or 631 312 6617

Performax 25 x 2 Dual Drum Sander with Power Feed; 5 hp 220 V Leeson Motor. Machine has "low mileage"

Bob Urso (631) 724-4625 or through the club website

12" Sear's bandsaw, good condition, \$175, 14" Reliance Bandsaw, good condition \$225, 10" Ryobi Tablesaw, good condition

Charlie Morehouse (631) 271-7251

3 hp 4 bag Reliant dust collector \$275, 12" radial arm saw, rusted but runs. Free to a good home.

Willie (631) 235-0186

Laser etched photos on wood.

Contact Dave Schichtel at (516) 671-5964 or www.the-wood-shop.com

Foley Model 387 Automatic Saw Filer Complete with extra files.

Norman Picht (631) 242-9255

Routers, Sanders, Drills and more for sale,

Dennis Taddeo 631 543 2256

Fine Woodworking Magazines, issues 1-159 plus index to 120 Excellent condition \$475

Woodsmith Magazines, issues 1-143 plus index to 126

Excellent Condition \$300

Gene Kelly (631) 265-5218

L.I. School of Classical Woodcarving & Woodworking Schedule for 2007 visit;

[http:// homepage.mac.com/walterc530/](http://homepage.mac.com/walterc530/)

Need someone to tune a working Craftsman 10" radial arm saw for a fee.

Harold Schechtel 631-539-6290

I have a live black walnut tree which is 55 inches in circumference at one ft. above the ground and extends to 25 ft. to the first branch. The tree is yours for the cutting.

Jim Ganci at 631-271-7517 in Dix Hills

Delta plate joiner bench mount tilting table good condition \$85.00.

Harry Wicks 631-734-5738

Cherry 4/4 and 8/4

Quarter Sawn Red Oak 4/4 by 14" wide
Hard Maple, Curly Maple, Assorted pieces of White Oak, Ash, Lacewood, Honduras Mahogany
Basswood 4/4 and 12" 12" Wide, Purple Heart,
Sequenced matched Birch Plywood 1/4" and 3/4"
Partial Sheet of 1/2 " cherry Plywood.

Craftsman bench top router table Free
Freestanding Router Table \$25.00
Common White Pine Assorted width and length Free

Chris Lee (631) 754-2456

Makita LS1013 10" Dual slide compound saw extra blade & Woodhaven .drop stop system .Mint condishion Never moved around. \$295.00

Jim Clancy 516-822-8250

A pair of new Dust collector ONE micron filter bags 18 inch diameter one has a window \$40.00.

Frank Kiefer (631) 331-9383

Porter Cable 7310 laminate trimmer. With fixed base and wrenches. \$50.00

Daryl Rosenblatt daryl@rosenblatt.com

LONG ISLAND WOODWORKERS



4 Pam Court
South Setauket, NY 11720