



THE Woodrack

January 2014



S H O W 2 0 1 3 /
T O Y S F O R T O T S

LIW BOARD OF DIRECTORS

<i>President</i>	Mike Daum
<i>Vice President</i>	Bob Urso
<i>Secretary</i>	Jim Heick
<i>Treasurer</i>	Mike Luciano
<i>Trustees</i>	Joe Pascucci
	Jim Macallum
<i>Membership</i>	Joe Bottigliere
<i>Newsletter Editor</i>	Daryl Rosenblatt
<i>Web Site</i>	Robert Coles
	Jim Macallum
<i>Show Chair</i>	Pat Doherty
<i>Librarian / Video Library</i>	Fred Schoenfeld
<i>Raffles</i>	"Papa" John Hons
	Joe Pascucci
<i>Refreshments</i>	Jean Piotrowski
	Charlie Felsen
<i>Audio/Video</i>	Karl Blessing
<i>Photographer</i>	Jim Macallum
<i>Workshop Coordinator/Food Critic</i>	Charlie James

THIS MONTH:**PRESIDENT'S MESSAGE****SECRETARY'S NOTES****TURNER'S GUILD****LI CABINETMAKERS****SECRET SOCIETY OF WOODCARVERS****TOYS FOR TOTS****SHOW 2013****PRESIDENT'S
MESSAGE****MIKE DAUM**

I trust that everyone is enjoying the holiday season! With this special double issue of the Woodrack newsletter, we look back at images of two of the greatest events of our year; our annual Show, and the Toys for Tots toy drive.

I truly cannot remember any of our Shows ever to disappoint. This year was no exception. Every year the quality of the members' work just keeps getting better and better.

As part of the judging panel, I can attest that it was very difficult for all of the judges to make decisions without very close inspection of the projects - any flaws in the work were very difficult to find.

Thanks goes to professional Long Island cabinetmaker Phil Chin, Sergis - a master craftsman from the Ukraine, furniture designer Joan Faro, and our own beloved Jean Piotrowski for braving the judging duties!

There was one collective criticism that the judges noted and, as you might have guessed, it was with the finishes of the projects. Some were expertly done, while others were heartbreaking. As a group, it would be prudent for us to focus more on aspects of finishing our work. This should include resources for outsourcing finishing work instead of attempting it yourself. The craft of woodworking does not necessarily include the art of finishing. Once again, a special thank you to Pat Doherty and the entire Show committee for another outstanding event!

And congratulations to all of the ribbon winners of the Show, and to everyone who exhibited their projects this year!

We should also thank the hard-working folks who meet all year long and make the majority of the toys for the Marines to distribute for the holidays. Another job well done!

Enjoy the images in the following pages...

**The Woodrack**

Volume 25 Number 1

Next meeting
Wednesda January 8th 7 PM
Brush Barn

Round Robin

WINNERS SHOW 2013



JOHN J. KEANE AWARD FOR EXCELLENCE
IN WOODWORKING

Peter Schultheiss

FURNITURE 1 BEDS & TABLES (WITHOUT DRAWERS)



FIRST PLACE - BILL LEONHARDT



SECOND PLACE - JIM BROWN



THIRD PLACE - BECKER

FURNITURE 2 DESKS & CASEWORK/CABINETS



FIRST PLACE - BRIAN MCKNIGHT



SECOND PLACE - LEO MEILAK



THIRD PLACE - RICH MACRAE

FURNITURE 3 CHAIRS



FIRST PLACE - DARYL ROSENBLATT



SECOND PLACE - STEVE PRICE



THIRD PLACE - BEN NAWRATH

ACCESSORIES



FIRST PLACE - STEVE PRICE



SECOND PLACE - DENNIS TADDEO



THIRD PLACE -JIM BROWN

TURNING



FIRST PLACE - ED MOLONEY



SECOND PLACE - MIKE JOSIAH



THIRD PLACE - CARL SANGER

SEGMENTED TURNING



FIRST PLACE - PETER SCHULTHEISS



SECOND PLACE - GARY MAHEW



THIRD PLACE - CARL SANGER

CARVING



FIRST PLACE - FRANK NAPOLI



SECOND PLACE - RICH ZIMMERMAN



THIRD PLACE - ROGER SCHROEDER

SCROLLWORK



FIRST PLACE - FRANK GULOTTA



SECOND PLACE -ALAIN TIERCY

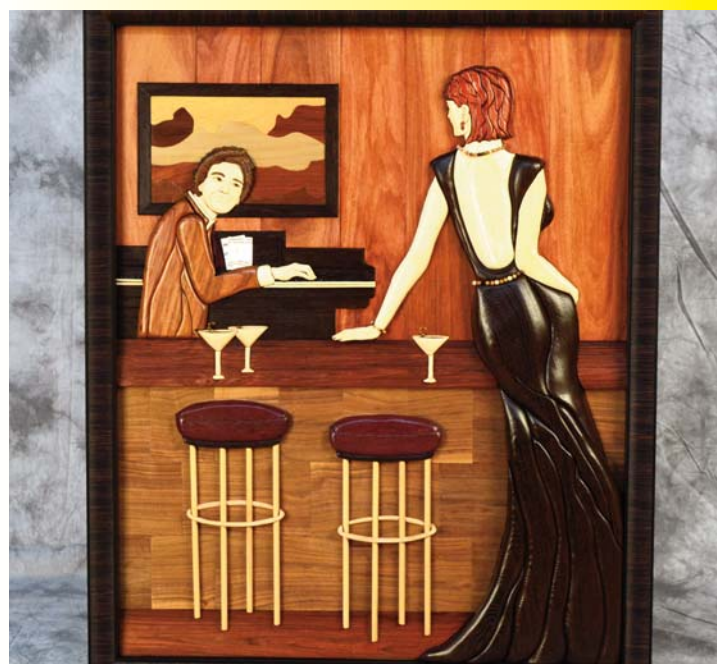


THIRD PLACE - ED PIOTROWSKI

INTARSIA / MARQUETRY / INLAY



FIRST PLACE - ROLF BEUTTENMULLER



SECOND PLACE - IRIS
ZIMMERMAN

THIRD PLACE - ANDI STIX

TOYS/CRAFTS/GAMES



FIRST PLACE - ROGER SCHROEDER



SECOND PLACE - TODD JETTE



THIRD PLACE - STEVE PRICE

UNIQUE



FIRST PLACE - DOUG PLOTKE



SECOND PLACE - JOE PASCUCCI



THIRD PLACE - COREY TIGHE

NOVICE



FIRST PLACE - K. KVILEKVAL



SECOND PLACE - ED JERMAN



THIRD PLACE - JIM HEICK

A CLOSE SHAVE



JOSEPH BOTTIGLIERE

It's been seventeen years with sixteen shows (officially) and they just seem to be getting better. Better does not necessarily equate to more revenue. I'm sure others share my opinion. Better, in my view, is derived from the camaraderie, participation and the quality of our exhibits. Personally, I observed that all those criteria were exceptionally met this year! Congratulations to all the ribbon winners. They were all well deserved. Which leads me to congratulate the winners of the plane shaving contest. It was a hard fought battle that ran into late Sunday afternoon. I'd first like to thank all those that participated in the event. Especially to those that had no practical experience using hand planes and stepped up to learn. It was a lot of fun for me and I suspect a good time for them as well. I'm sure Grandpa Vanek is happy seeing his old Stanley back on the boards!

As I mentioned, there was plenty of participation at the planks. However, there were only ten members willing to put their names down on the record sheet. And unfortunately, the two Ehrler boys were not eligible to compete ... just yet. (Soon enough though, Roger.) Another thing, allow me to reiterate: these contests are no reflection of anyone's woodworking skills. It may be, perhaps, an indication of how well one can sharpen a plane iron or how meticulous they may be about tuning and setting up a plane. But it will not prove any design talent; will not illustrate how accurate will be their joinery or even how nice a finish they will apply - though it is a good start. Also, keep in mind that any of these entries and 90% of the test runs we measured would all be acceptable for typical woodworking. Every shaving measured was under .003" (with one exception). That's about the thickness of a sheet of paper - more than adequate for leveling and smoothing.

The shavings were measured using a new ratcheted micrometer with a precision of .0001" (+/- .0005"). No, it was not a fancy expensive tool so do not compare these findings with those taken, let us say, in a Japanese competition. But all the shavings were measured by me with the same device so they were all rel-

ative and fair.

There were several types and manufacturers of planes used. Most were refurbished Stanleys with one that was not so refurbished (but it worked). There were a few Lie-Nielsens as well as a two or three Lee Valley - both bevel up and bevel down. There was even a couple Japanese style and Knight infill planes. Judging by the results, it really didn't seem to matter what type of plane was used. They all performed adequately.

For most of Saturday it looked like the competition was over early and Daryl would sail away victorious, pounding all other attempts by a margin of .0003 or more. But Sunday brought a new dawn and with it some freshly sharpened blades and the boat began to rock. As the thicknesses began to diminish so did the competition. The flurry of spills gave way to but a few gossamer thin shavings (all of which I had to sweep up - thank you); the crowd of contenders dwindled to one sole woodworker. Daryl's .0009" shaving seemed impossible to beat. Then, as though by accident, Rich Macrae presented a fine ribbon of Alaskan yellow cedar no thicker than .0008"! As if a flag went down or a timer went off, everyone dropped their planes to their sides and conceded victory in a hard fought battle.

So if you should see Richie skulking about your SIG meeting and you're wondering if this guy really paid his dues or is just exploiting his reputation and popularity, rest assured he is in good standing. His reward for that amazing effort is his 2014 club membership including all four SIGs as well as bragging rights and the honor of telling Daryl: "Na-ne, na-ne, na-na."

Good job everyone and thank you!

Rich Macrae: .0008"	Roger Ehrler: .0010"	Charlie Morehouse: .0011"
Daryl Rosenblatt: .0009"	Mike Daum: .0010"	Rich Blohm: .0018"
Leo Meilak: .0010"	Jim Brown: .0011"	Joe Vanek: .0022"
		Lisa Doherty: .0034"

SECRETARY'S NOTES



JIM HEICK

Our meeting started around 7:10. Mike Daum addressed the membership regarding the upcoming LIW Show and Exhibit.

The show was being held on Saturday November 9th and Sunday Nov. 10th. Setup was Friday Nov. 8th. Mike urged the group to sign up for the various tasks. Various parts of the show were addressed. Vic Werny spoke about the "Tool Garage Sale". Joe Bottigliere spoke of the "Plane Shaving Contest" and I mentioned about the Seminars. As of the meeting, we still had numerous openings. By meeting's end, all spots were filled.

A special thanks to Jean Piotrowski for her efforts to help publicize our show. Various articles were published in many town newspapers as well as Newsday.

We had one new guest for the evening. Robert Schaller from Smithtown, found out about the club online.

Elections for the Executive Board were held. All incumbents were re-elected.

President- Mike Daum

Vice President- Bob Urso

Treasurer- Mike Luciano

Secretary- Jim Heick

Membership Chairman- Joe Bottigliere

Trustees- Jim Macallum, Joe Psacucci

A special thanks to Charlie Felsen and Ed Piotrowski for volunteering to be the nominating committee, once again.

Dennis Taddeo addressed the members speaking of tools for sale.

Mike Daum mentioned he knows someone with a 6" Powermatic Jointer for sale.

If interested, contact Dennis or Mike.

The raffles winners for November were:

Steve Price

Rick Nicolini

Steve Fulgoni

Everyone is encouraged to buy the raffles in an effort to help offset club expense.

Our speaker for the evening was Rich Macrae. Rich demonstrated the art of string inlay and banding. Rich presented his work with two beautifully crafted side tables. Both tables were on display at the exhibit.

Unfortunately, I am unable to give more of an explanation of Rich's demo. I sat and watched as Rich explained the various techniques used to create the grooves for the banding. I was so interested, I forgot to take notes. Please see Rich if you have any questions regarding his techniques.

On a side note... A great big thanks to Patrick Doherty, Show Chairman and all our members who participated in making our show a great success. From estimates received, over 900 people attended the show. Our goal as LIWoodworkers is to showcase the talents of our members, while educating the public about our club and the many facets of woodworking.

I personally, would like to thank the members who hosted a seminar at the show. The seminars were well received by our members who attended as well as the general public.

Daryl Rosenblatt

Rich Mc Rae

Charlie Morehouse

Frank Napoli

Jim Brown

Ed Dillon

There will be an Executive Board Meeting, Monday December 9th 6:00-8:30pm at the New Village Recreation Center. 11 Wireless Road , Centereach.









TURNER'S GUILD



MIKE JOSIAH

The November turners meeting was held on 11/14

Steve opened with a statement that the participation in the 2013 show was excellent! Show attendance is thought to be in the range of 860 people. (Not confirmed yet) In all an excellent show!

December's meeting will be our annual holiday party. Please let Jean know if you will be attending.

Dues for 2014 are due!

To upgrade the safety during demonstrations, the club authorized \$40.00 for a new face shield. For the next show we need to make/buy Plexiglass shields like the toy gang uses.

The December Chapter Challenge is Holiday Ornaments

Tonight's demonstrations are on holiday ornaments.

4 different ornaments were demonstrated. A Christmas tree, Sea Urchin ornament, Snowman, and a light bulb ornament.

Christmas tree

Start with a 3 x 3 x 7" blank and set between centers. Round the blank and turn so it has the shape of a cone. Turn a tenon on the base and set in a chuck. Using a live center for support, re-turn the cone shape and sand the cone smooth.

Draw lines every 1/2" from the top to the bottom. Leave about 1" open at the bottom for the trunk. Using a narrow parting tool, cut a groove at each line to a depth of 5/16". Check the depth repeatedly with preset calipers. The trunk must be uniform for the tree to look good.

Cut the trunk using a larger parting tool

Finish the top of the tree using a detail gauge. Use light cuts here!

Finish turning the base, sand again and part off. Use a coping saw for the final cut.

The tree can be finished as desired.

Sea Urchin ornaments

Sea urchin shells can be purchased at woodcraft, or there are many online shell sellers. The best type of sea urchin for this purpose is a Sputnik Urchin. They have a variety of colors and lots of depth in the shell's surface.

Sand the top and bottom opening with a Dremel type tool and a sanding disk. Sand the hole round. Turn a tenon of a dark wood to fit in each of the holes. Drill a 1/4" hole in the center of each.

Turn a small finial for the top and a longer finial for the bottom. You can glue the pieces onto the shell or use a 1/4" dowel running through the shell to connect the two pieces.

Note from Mike: I have read that using a slow expanding foam inside the shell works great to help prevent breakage during the sanding as well as durability for the ornament.

Snowmen

(Sponsored by the Long Island Wood Workers Supply)

This snowman was originally in the American Wood Turning Magazine written by Nick Cook

Set the spindle black so you can turn 2-3 snowmen per blank. (Three sections per snowman)

It is recommended to keep these sizes for each of the sections: 1/1/4" for the base, 1/1/8" for the middle and 3/4" for the top. If you decide on a different size, try to keep these proportions. It makes for a better looking snowman.

Start between centers. Round the blank and using a spindle gouge turn the tree sections. Try to keep each section as round as you can.

Sand and part to separate. Sand the bottom flat, and sand the top at an angle so the hat isn't on straight.

Using a contrasting wood, turn the hat. A traditional hat is a top hat but you can use your imagination on this..Drill a small hole in the top of the hat for a small eye hook. Glue the hat onto the snowman.

Use paint to make the buttons and nose.

Light Bulb Ornament

Have an actual large bulb handy for reference.

Keeping the tail stock engaged, taper the end of the blank down leaving just a bit for the tail stock. Turn the bottom of the bulb and then the base. Creating a series of small beads creates the illusion of a threaded base.

Remove the tail stock and using a detail gauge turn the tip using very light cuts.

Sand the bulb, and part it off the lathe. If wanted, use acrylic paints to color the bulb and base.

Happy Thanksgiving to all!

See you next month!





LI CABINETMAKERS



BARRY SALTSBERG

The November meeting was called to order by President Bob Schendorf promptly at 7:11. There were 25 in attendance.

Elections were held. Since there were no challenges for any office, there were no personnel changes to the board. However, Barry Saltsberg assumed the duties of secretary, and Steve Price became a trustee. The board is as follows:

President - Bob Schendorf

Vice President - Jim Brown

Secretary - Barry Saltsberg

Treasurer - Gary Goldberg

Trustees - Steve Price

Gary Mayhew

De facto trustee - Harry Slutter

We had 3 new members:

Bill Gyves

Steve Wacker

Mike French

Steve Fulgoni was a visitor.

There was a discussion of acquiring a table saw for member use. (Note that we meet at Bob Schendorfs commercial shop, and the table saw is not for member use.) V.P. Jim Brown has researched it, and, from a standpoint of both technical quality and safety, recommended we get a Saw Stop table saw. The question of how to finance it remains.

Winners of the raffle were Larry Schwartz and Bob Schendorf.

Show and Tell:

Larry Schwartz brought in a shelving unit in progress. It is made of plywood, with shop-made veneer edges. The veneer was made using a push block on the table saw. The ingenious construction is 2 layers of thin plywood separated by hardwood spacers to form a sandwich, making it light.

Jim Hennefield brought in a box with the sides sliced off a single board of birds-eye maple with the sides matched end to end, such that the grain is continuous around all 4 sides. Jim said that when he sliced the sides from the stock, they twisted. His solution was to glue plywood glue blocks near the edges so that when he glued the mitered corners, they would be straight. The box had mahogany splines at the corners to contrast with the birds-eye maple sides. Jim said the splines were too soft and were difficult to insert. Bill Leonhardt suggested that he squeeze the splines in a vice prior to insertion. The glue will cause them to expand back to their previous thickness, making for a tight fit. The finish on the box was silky and flawless.

Ben Nawrath had a sharpening station consisting of a granite square (floor tile) and a length of solid surface material (Corian) mounted to a plywood backing. The granite and Corian would have sandpaper affixed to them. The granite is for plane blades, chisels, etc., and the long piece of Corian is to flatten plane soles.

There was a discussion of finishing for clear coatings. Bob suggested (to general agreement) that Zinnser Clear Coat, which is a de-waxed shellac, be used under any clear coat. Clear Coat is the only commercially available formulation of de-waxed shellac, but you could use de-waxed flakes to make your own shellac.

The main topic of the meeting was table saw safety. Norm Bald went over a safety test that was handed out at the October meeting. Jim Brown talked about, and demonstrated table saw safety.

The December 10th meeting was called to order by President Bob Schendorf.

Show and Tell:

Jim Brown showed a folding band saw table.

Rob DeMarco showed a nice band saw box.

Jim Brown brought up the question as to whether we should have another weekend seminar as we had had last year with Ron Herman, availing ourselves with the services of an outside expert. After some discussion, the idea was tabled for further exploration.

Jim Brown suggested we form working groups to fabricate small projects that could be offered for sale at our annual woodworking show gift shop. There is, apparently, a need for more diversity in the gift shop offerings. There was some discussion, and the proposal was tabled for further exploration.

Raffle winners were Harry Slutter and Joseph Vanek.

We had a drawing for the “Chapter Challenge” awards. Rob Demarco was the big winner of a \$100 gift certificate from Lee Valley. Winning \$25 Lee Valley gift certificates were rich Blohm, Steve Price, Norm Bald and Roger Erler.

The business portion of the evening having been completed, we proceeded to the serious task of the holiday social.



SECRET SOCIETY



JOSEPH RIORDAN

Carvers' Minutes November- December 2013

The November 2013 meeting of the Secret Society of Woodcarvers (SSOW) aka Carvers S.I.G. was called to order by Steve Blakley.

We welcomed Jim Kazanas, a guest with an interest in wood carving..

New/Old Business:

Steve Blakley will explore the possibility of securing another speaker for a future meeting.

Show and Tell

Matthew Reardon presented his completed carved gnome. Other members showed work in progress. A number of members are carving Cypress Knees – see photos.

Open Carving

Al Trepiconne, an accomplished carver and President of the Brookhaven Woodcarvers, visited the November meeting to provide some guidance for the cypress knee carving.

Photos

- a_ Matt's completed Gnome
- b_ Al Trepiconne's completed Wood Spirit Knee
- c_ Richie Z's Knee - in progress
- d_ Billy Cardosanto working on the details

Carvers' Minutes December 2013

The December 2013 meeting of the Carvers S.I.G. (December 18) was an Ice Cream Social.



SHOW PHOTOS

JIM MACALLUM





SHOW PHOTOS

JIM MOLONEY









The Marketplace

Routers,Sanders,Drills and more for sale,
Dennis Taddeo 631 543 2256

L.I. School of Classical Woodcarving & Woodworking Schedule for 2007 visit;
[http:// homepage.mac.com/walterc530/](http://homepage.mac.com/walterc530/)