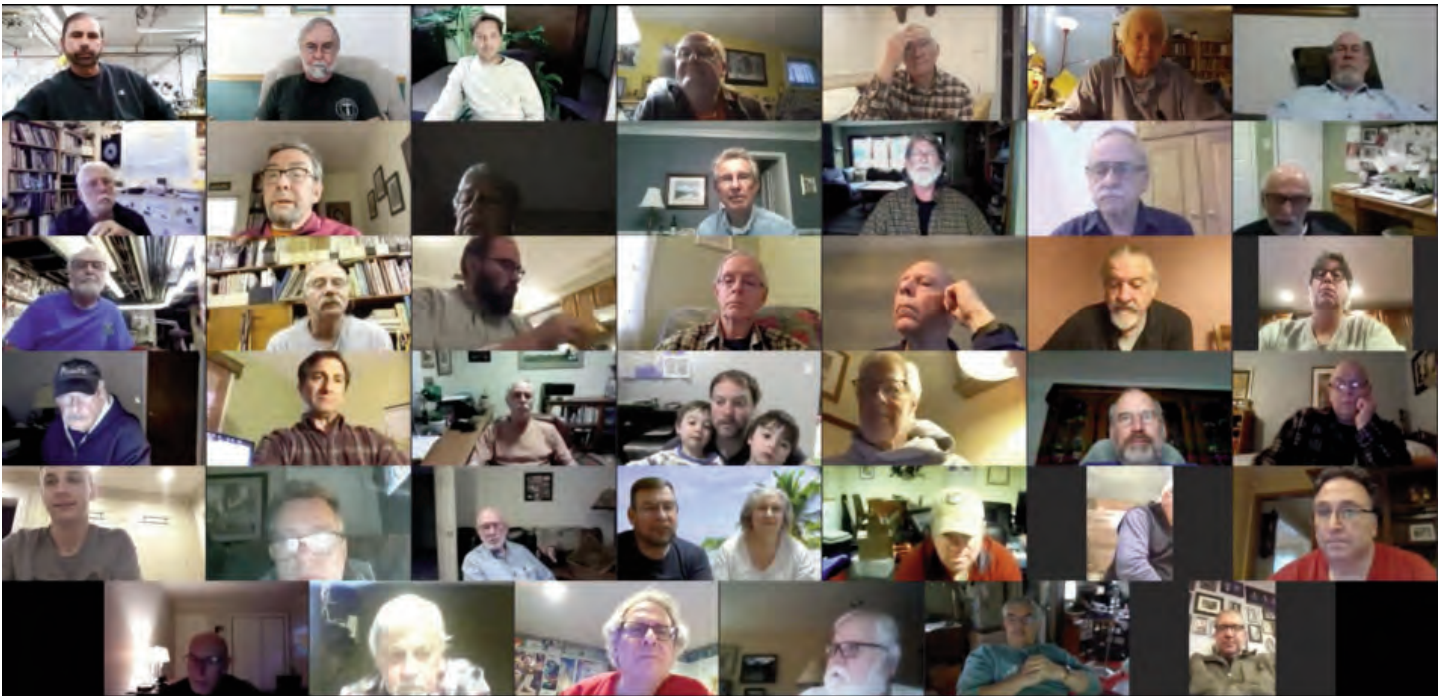


THE Woodrack

June 2020



OUR FIRST



VIRTUAL MEETING

LIW BOARD OF DIRECTORS

<i>President</i>	Mike Daum
<i>Vice President</i>	Bill Leonhardt
<i>Secretary</i>	Michael R. Mittleman
<i>Treasurer</i>	Steve Fulgoni
<i>Trustees</i>	Joe Pascucci
	Ed Piotrowski
<i>Membership</i>	Joe Bottigliere
<i>LICFM SIG President</i>	Ben Nawrath
<i>Turner's Guild SIG President</i>	Jim Moloney
<i>LISA SIG President</i>	Steve Kelman
<i>SSOW SIG President</i>	Frank Napoli
<i>Newsletter Editor</i>	Daryl Rosenblatt
<i>Associate Editor</i>	Michael R. Mittleman
<i>Website</i>	Jim Heick
	Jim Moloney
<i>Show Chair</i>	Emma Hendler
	Bill Leonhardt
	Harry Slutter
<i>Raffles</i>	Brian McKnight
	Mark Oriano
<i>Refreshments</i>	Jean Piotrowski
	Charlie Felsen
<i>Audio/Video</i>	Rich Riedel
<i>Programs</i>	Corey Tighe
	Bill Leonhardt
<i>Photographer</i>	Jim Moloney

THIS MONTH:**SECRETARY'S NOTES**

LICFM

PUZZLE

**SECRETARY'S
NOTES****MICHAEL
MITTMAN**

The May 6th General Meeting was called to order by LIW President Mike Daum at 7:08 PM. The session was the LIW's very first live-streaming General Meeting. The combination of novelty and the COVID-19 situation precluded most of the usual in-person program.

ANNOUNCEMENTS LIW broadcast quality has continued to evolve as we gain experience with this medium. A series of quality broadcasts has been scheduled. These include presentations from Dean Dauplaise, and acknowledged master craftsmen Garrett Hack, Michael Fortune, and Gary Rogowski. These sessions are open to all LIW members. Each demonstration/presentation will be followed by a Q & A session.

NEW MEMBERS None.

TREASURER'S REPORT Skipped due COVID-19 related issues.

MEMBERSHIP REPORT Skipped due COVID-19 related issues.

SHOW AND TELL Skipped due to the novelty of the meeting format.

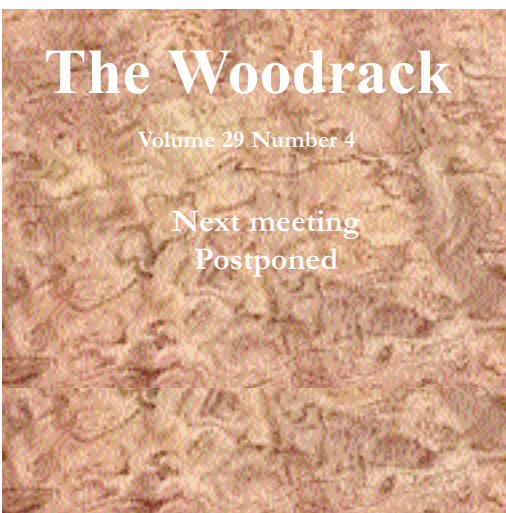
DRAWING WINNERS Skipped due to the meeting format.

PRESENTATION – DEAN DAUPLAISE – SHOP TOUR AND HAND-CUT DOVETAIL DEMONSTRATION

Intrepid LIW member Dean Dauplaise provided viewers with a shop tour and an in-depth demonstration of hand-cut dovetail joinery. Dean's shop is located in a converted two-car garage space. Besides a sizable collection of stacked lumber, power and hand tools, Dean showed a workbench he had built from scratch. Nice effort there.

The meat of his presentation dealt with hand-cut dovetails. In the hour-long segment, Dean demonstrated and explained the techniques he employs using an actual project piece, not scrap lumber. Wow! On the eternal tension between tails or pins first, Dean landed on tails. After laying out the tails, Dean used dovetail and fret saws, as well as chisels to make the cuts. He has practiced with the hand tools extensively and it showed throughout the demonstration. His actions were rapid and accurate.

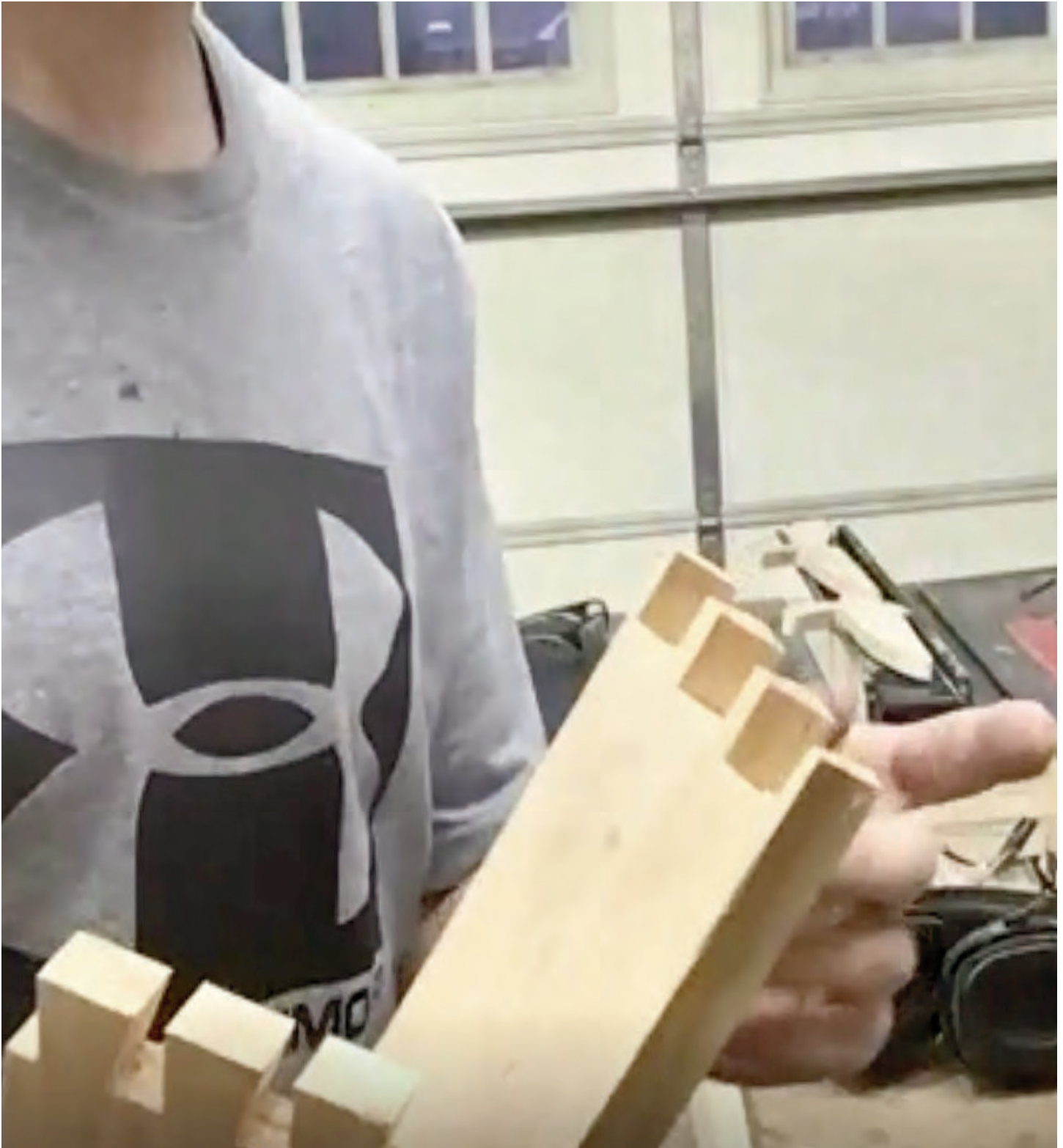
Next up were the pins. After carefully laying out the joinery, Dean used his dovetail saw to cut the pin legs. Instead of using mallet and chisel or a fret saw to remove the waste material, a router was employed. Of course, chisels were used for the final fit. A tight-fitting dovetail joint emerged. Hats off to Dean Dauplaise for a fine demonstration. Thank you.



ADJOURNMENT The meeting adjourned at 9:30 PM.

JUNE MEETINGS Once again, a televideo format will be employed. Besides the typical general meeting business, **Michael Fortune** will be presenting on planning time and joinery; a Q & A session will follow. Be sure to login on June 3, 2020 at 7 PM. Mike Daum will send out instructions shortly before the meeting date.

On June 8th at 7:30 PM, Ben Nawrath and Mike Daum will co-host a LICFM meeting which will include a presentation about inlay in furniture from **Gary Rogowski**. A Q & A session will follow.









LICFM



BOB WOOD

Ben Nawrath and Mike Daum, Co-hosts

ANNOUNCEMENTS Due to COVID-19 precautions, the May 12, 2020 LICFM meeting was the first-ever session conducted totally via televideo. Besides the usual SIG business, the meeting included an hour-long live stream from Garrett Hack, master furniture maker. A suggestion was to use You Tube to show our shops and view other woodworkers.

SHOW AND TELL The meeting started with a couple of show and tells:

Ben Nawrath showed a wine bottle stopper made of cherry. Ben also showed hall furniture made of birch plywood and sycamore.

Joe Bottigliere showed an antique door. It was made from alder which Joe bought from Harry's shop.

Rich Reidel made some wooden buttons.

Barry Issberner made some keepsake boxes from exotic woods such as bubinga and fumed eucalyptus. It was also his first time working with veneer.

Jim Hennefield made a hanging split door cabinet with hand-cut dovetails.

Bill Leonhardt used a wooden screw for his workbench and explained the intricacies of installation.

Mike Luciano had used a wooden screw for a Moxon vise and suggested soaking the screw overnight in Mineral Spirits before cutting the threads.

Norm Bald made an ambrosia maple cabinet/bar.

PRESENTATION GARRETT HACK

The featured speaker for the evening was Garrett Hack. This is not a typo - Garrett Hack. Garrett started by showing a 1943 27" band saw and a horizontal mortising machine. Garret showed a few of the pieces he made. Among these was a high-gloss table made of curly birch. It was made with curved drawer fronts that required a three-part lamination. Garret used full sized paper patterns. He went into detail about joinery, drawer construction and the woods that he used.

In his shop, Garrett had the bottom section of a music cabinet. It was made by Edward Barnsley. Garrett pointed out the various details and short cuts that the builder employed in constructing this cabinet.

Garrett has a desk project with uses a tambour door and secret compartments with magnets.

The desk has curved rails encircling the piece. Again, lamination was used with white oak and maple. Garrett expected spring back of 15/16", but it was only a 1/4". Garrett gave detailed information on all the projects that he men-

tioned.

During the Q & A portion of the presentation Garrett stated he does not like dowels. Glues were brought up and Garrett said he likes Titebond III and Gorilla Clear glue, which is expensive. The Clear Glue is a lubricant and has a friendly open time, which is especially helpful when laminating and it does not foam. For finishing, Garrett uses shellac, German Flakes, with a half-pound cut; it is watery. Garrett also showed hand planes from various makers in the U.S. and abroad.

Overall a tremendous amount of information and insight was presented by such an accomplished woodworker. Our thanks to Garrett.







PUZZLE

MICHAEL R. MITTLEMAN

And what is so rare as a day in June?

Michael R. Mittleman

How to play: Complete the numerical grid so that every row, column and 3 x 3 box contains all digits from 1 to 9.

		6	5			8	7	
		5			4		3	
			8	6				9
			3		7			
		8				4		
			2		5			
5				7	1			
	1		9			5		
	6	7			2	1		

8	2	6	4	5	3	9	1	7
5	1	3	7	2	9	6	4	8
9	4	7	1	6	8	2	5	3
6	8	4	3	1	2	7	9	5
2	9	5	6	8	7	1	3	4
3	7	1	5	9	4	8	2	6
4	6	2	9	7	5	3	8	1
1	5	9	8	3	6	4	7	2
7	3	8	2	4	1	5	6	9

Solution to April