



LI WOODWORKERS
ESTABLISHED 1991

"Dedicated to the pursuit of woodworking"

Building a Beta* Bandsaw Box

Michael R. Mittleman

* *Apologies to all. It's the title I landed a pun.*

Why Build Bandsaw Boxes???

- Infinite number of designs possible
- Relatively small projects
- Comparatively quick builds
- Inexpensive materials / few tools required



Building a Beta* Bandsaw Box

Materials

- 1" x 6" x 48" pine board (relatively knot-free)
- Small drawer pull
- Flocking material / acid brush
- Glue
- Blue carpenter's tape
- Finish

Tools

- Bandsaw (duh!) and 3/16" 4 TPI Skip Tooth blade
- Belt or disc and random orbital sanders
- Router and 1/8" R roundover bit
- Clamps

Building a Beta* Bandsaw Box

Part I, The Build

1. Cut, glue, and clamp boards to achieve target thickness, often 4" to 5". Maintain consistent grain orientation.



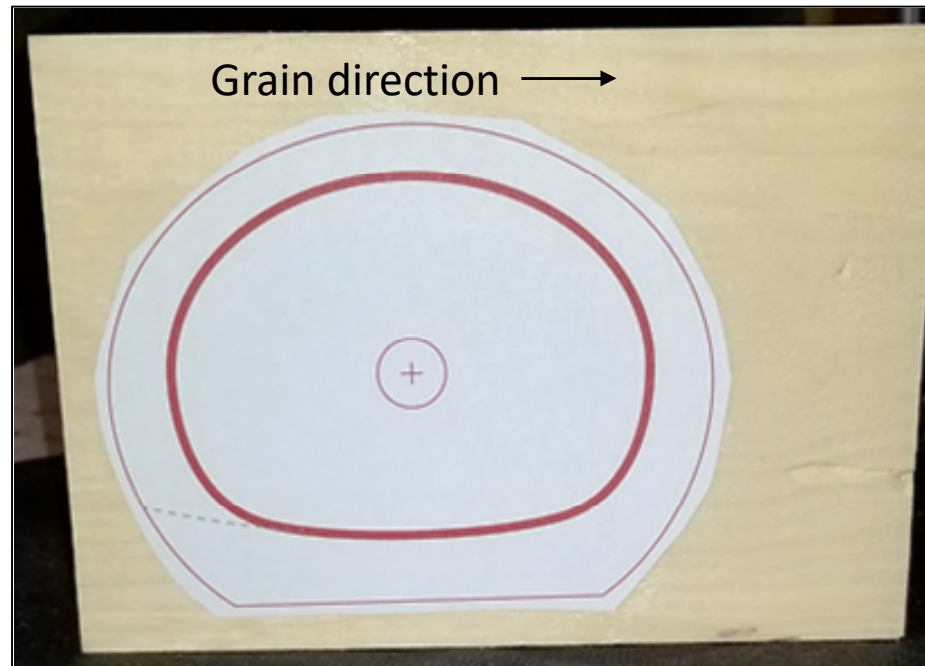
Glue-up



Clamps removed

Building a Beta* Bandsaw Box

2. Attach pattern. Use spray glue to hold in place.



Pattern from *The New Bandsaw Box Book* by David Picciuto

Building a Beta* Bandsaw Box

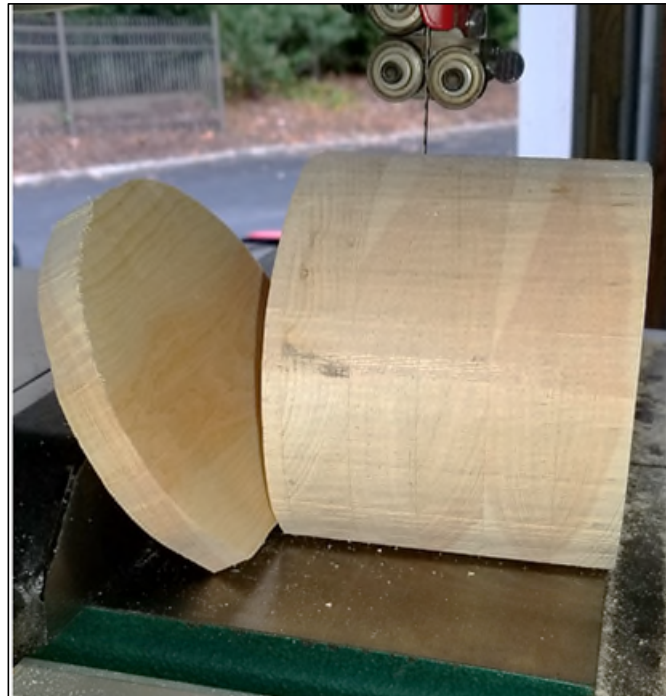
3. Using a 3/16" 4TPI skip tooth blade, carefully cut along the narrow outer ring.



Stay just outside of pattern line

Building a Beta* Bandsaw Box

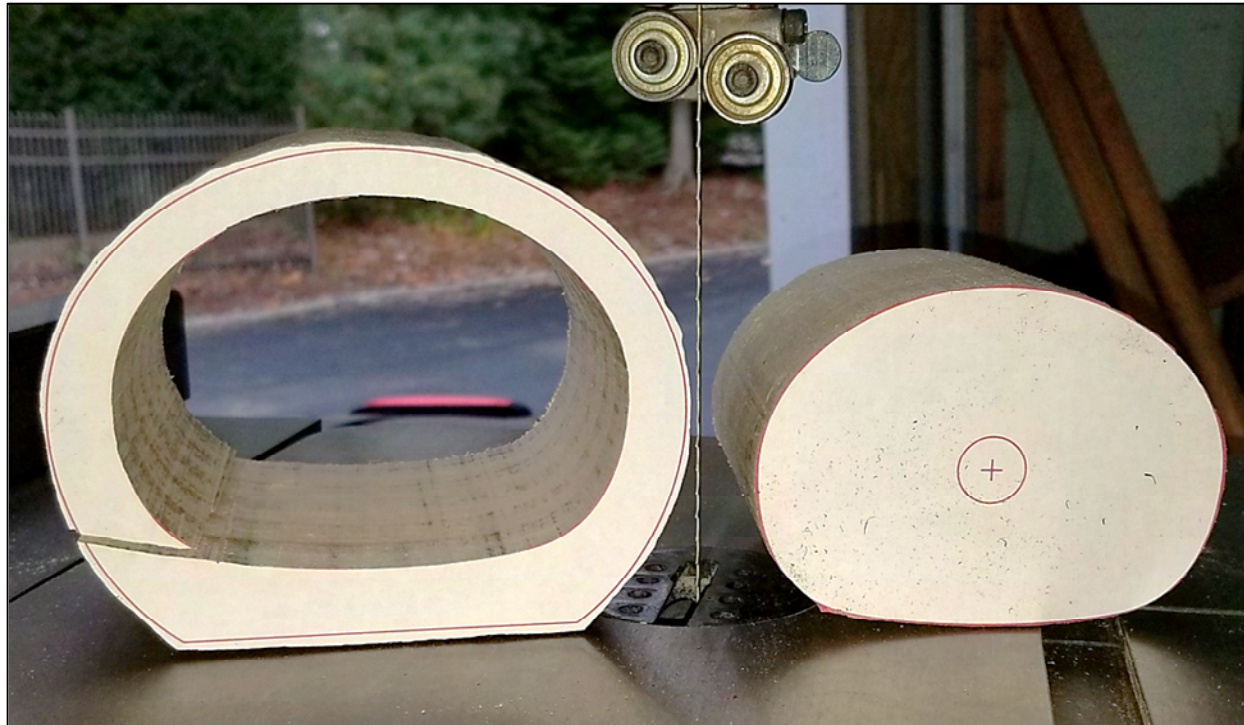
4. Cut the back off (opposite the pattern side). Make it $\frac{1}{2}$ " – $\frac{5}{8}$ " thick. Save this piece.



Use the bandsaw fence to maintain constant thickness

Building a Beta* Bandsaw Box

5. Remove the core by cutting the pattern along the thick line.



Stay in the middle of the pattern line.

Building a Beta* Bandsaw Box

6. Glue and clamp the outer shell to hide the cut line.



Firmly clamp

Building a Beta* Bandsaw Box

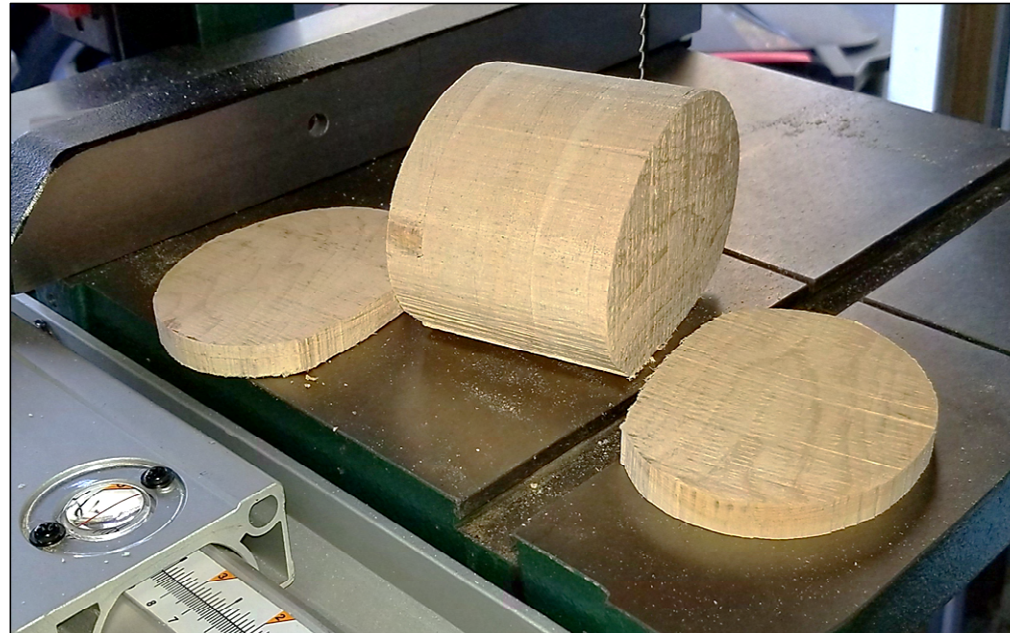
7. Reattach back piece to outer shell.



Securely clamp until glue dries

Building a Beta* Bandsaw Box

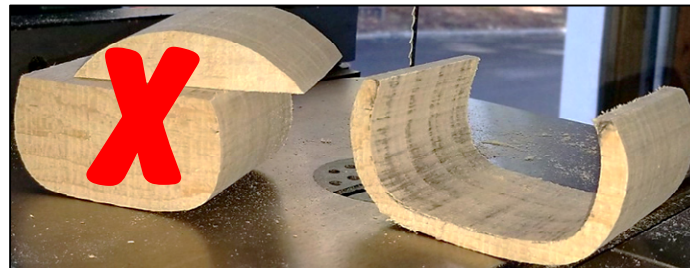
8. Carefully sand surfaces smooth to the pattern line of the outer shell only. Disc or belt sanders work best.
9. Slice off front and back pieces from drawer section. Aim for thicknesses of $\frac{1}{2}$ " or slightly more.



Front and back from drawer core

Building a Beta* Bandsaw Box

10. Draw outline sidewalls and bottom of drawer. Cut-out waste material.



Sidewalls and bottom
about 3/8" thick

Building a Beta* Bandsaw Box

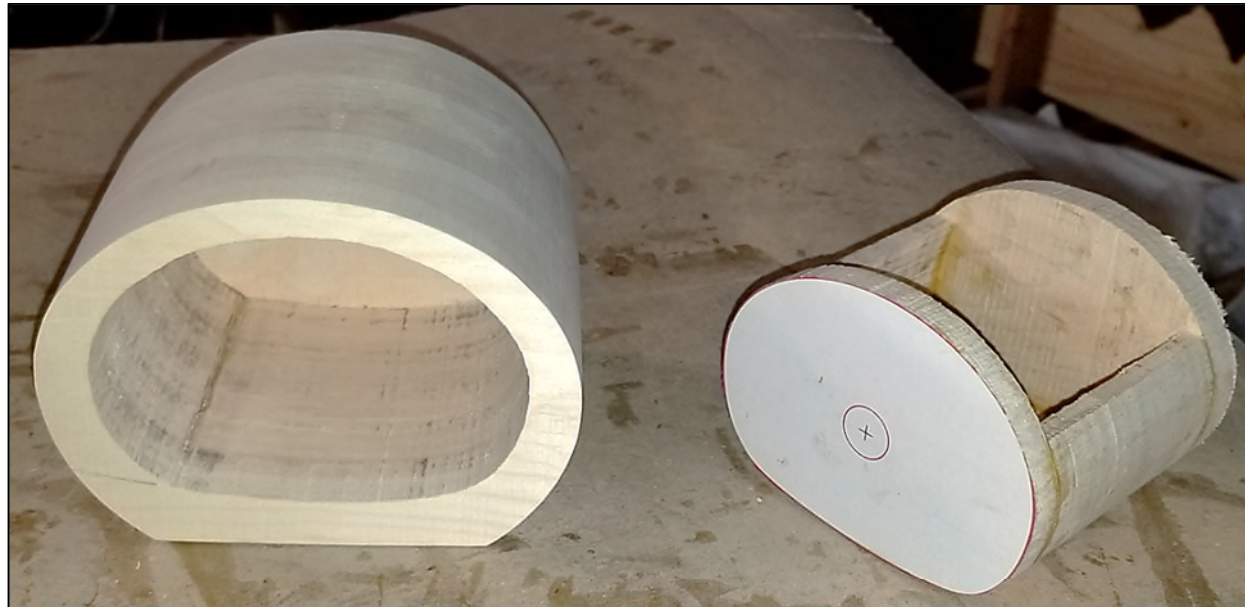
10. Reattach front and back to drawer core.



Glue and clamp drawer assembly

Building a Beta* Bandsaw Box

11. Very carefully sand the external drawer surfaces, just enough to remove saw marks. Remove pattern.



Components of the beta bandsaw box

Building a Beta* Bandsaw Box

Moving on...



Part II, Finishing

1. Use shellac, lacquer, whatever, *on outside surfaces only! Do not sand inner case or any drawer surfaces.* Apply 3 or more coats.



Use blue carpenter's tape to prevent flocking adhesive from adhering to finished surfaces

Building a Beta* Bandsaw Box

2. Important components of a flocking session. Not shown, but equally important, are a disposable bristle brush, dust mask, gloves, a cardboard box in which to apply the flocking, and an apron.



Case, drawer, flocking gun, adhesive, carpenter's tape, and flocking material

Building a Beta* Bandsaw Box

3. If possible, flocking should be done outdoors. No odor, but flocking airborne filaments get everywhere. A mask must be used. Once applied, the flocking adhesive allows only 15 minutes of working time. It is a messy process.



Flocking applied. Allow 24 hours to dry thoroughly.

Building a Beta* Bandsaw Box

There you have it – A Beta Bandsaw Box.



Completed!

Some Helpful References

Krabbtree, Kyle. *Make Your Own Bandsaw Box*.

https://www.woodcraft.com/blog_entries/make-your-own-bandsaw-box

Woodcraft, 2019.

Picciuto, David. *The New Bandsaw Box Book: Techniques & Patterns for the Modern Woodworker*. Cedar Lane Press, 2020.

Ramsey, Steve. <https://woodworkingformoremortals.com/how-to-make-a-bandsaw-box/> YouTube, 2020.



Mike Mittleman
Long Island, New York
40° 52' 31.7604" N
73° 11' 3.5700" W
mrmittleman1@gmail.com