

THE Woodrack

April 2025



MIKE JOSIAH TURNS A BOWL

LIW BOARD OF DIRECTORS

President	Mike Daum
Vice President	Corey Tighe
Secretary	Michael R. Mittleman
Treasurer	Steve Fulgoni
Trustees	Robert DeMarco
	Ed Piotrowski
Membership	Steve Kelman
LICFM SIG President	Ben Nawrath
Turner's Guild SIG President	Jim Moloney
LISA SIG President	Patti Lerner
SSOW SIG President	Frank Napoli
Tech SIG President	Brian Monks
<hr/>	
Newsletter Editor	Daryl Rosenblatt
Associate Editor	Michael R. Mittleman
Website	Jim Moloney
Show Chair	Bob Lerner
Raffles	Ed Piotrowski
Refreshments	Jean Piotrowski
	Charlie Felsen
Audio/Video	Jim Moloney
Programs	Corey Tighe
Photographer	Joe DiCristina
	Jim Moloney

THIS MONTH:**SECRETARY'S NOTES****LISA****TURNERS' GUILD****LICFM****SSOW****LOCK, STOCK & DARYL****PUZZLE****SECRETARY'S
NOTES****MICHAEL
MITTLEMAN**

LIW President Mike Daum called the March 5th General Meeting to order at 7:10 PM. The session was held in person at the Brush Barn and live-streamed via Zoom.

ANNOUNCEMENTS Request from the Bridgehampton Museum:

"Hi, I am the Executive Director of the Bridgehampton Museum. I am reaching out to see if members of your organization may be interested in coming out to give a lecture on some part of the history of woodworking. Or perhaps, if we could work together to host a workshop or two here at the museum like the ones I had seen on your website. Something like the Chip Carving workshop looks like it would be a fun project we could host."

Connor Flanagan

Executive Director

The Bridgehampton Museum

PO Box 977P

Bridgehampton, NY 11932

(631) 537-1088 x 101

Bridgehamptonmuseum.org

Current status of the Canine Companions project.

Collection of LIW dues for 2025 continues. The cost remains \$75 for general membership and \$20 apiece for family members over 18.

TREASURER'S REPORT Treasurer Steve Fulgoni reported that the LIW is in sound financial condition. The donation from the Steve Price family is very helpful. Steve suggested the funds could be used for equipment, workshops, or speakers.

MEMBERSHIP REPORT Membership Director Steve Kelman reported that some members have yet to pay their 2025 dues. Those members with outstanding dues will be cut-off from LIW activities as of March 6, 2025. Steve went on to thank those members who have made donations to the LIW this year.

SHOW AND TELL Mike Josiah displayed two stunningly turned and finished spalted maple pieces, a bowl, and a platter. He used epoxy to fill the cracks. This was exceptional work.

The Woodrack

Volume 34 Number 4

Next meeting
Wednesday March 5th 7 pm
Brush Barn

RAFFLE Bob Wood was the lucky individual this month. Congratulations, Woody.

OTHER BUSINESS

LICFM Meeting, Ben Nawrath, SIG Pres., 3/11/2025. Bob Schendorf will be talking about milling stock and other fun stuff. LICFM will meet at the Brush Barn in Smithtown, starting at 7 PM.

LIWG Meeting, Jim Moloney, SIG Pres., 3/13/2025. Charlie Felsen will do his postponed mushroom turning demo. The meeting is at the Kings Park K of C and starts at 7 PM.

Wood Tech Meeting, Brian Monks, SIG Pres., - mentioned that he is concerned by the declining meeting attendance. He requested members email him with ideas that could make the group more attractive.

LISA Meeting, Patti Lerner, SIG Pres., 3/20/2025.

The scrollers will be having an advanced acrylic paint demo and practice. The meeting is at the Kings Park K of C and starts at 7 PM.

SSOW Meeting, Frank Napoli, SIG Pres., 3/27/2025. Open individual carving. Meeting location: The Woodturning Store Warehouse: 81A E Jefryn Blvd, Deer Park, NY 11729. Time 11A – 1P.



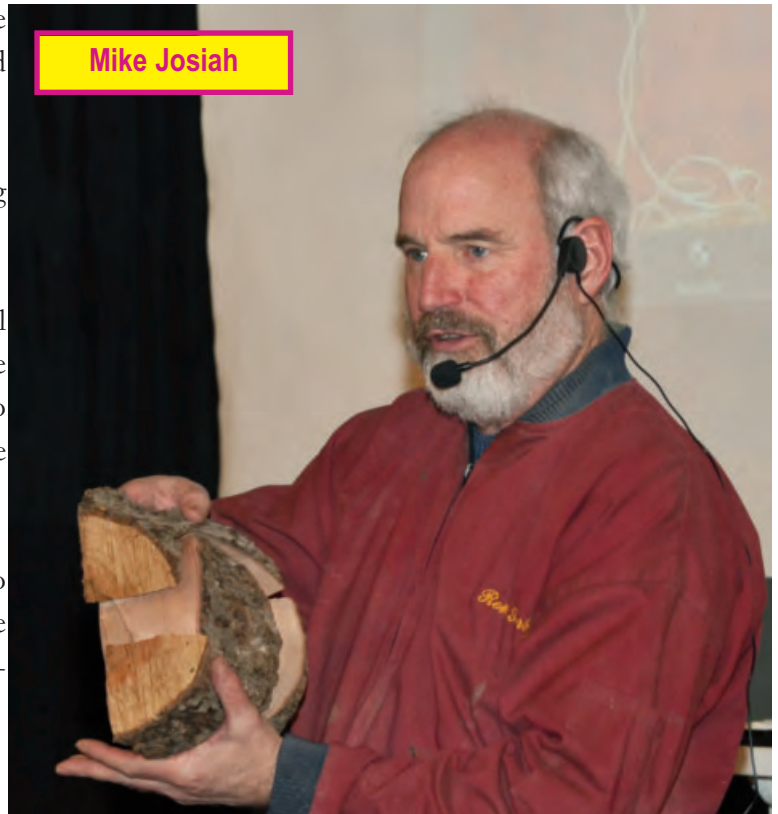
Toys Meeting, Larry Wagner, Chair, 3/19/2025. The meeting is at 12 Hamilton Lane, Huntington, NY and starts at 6:30P.

PRESENTATION Mike Josiah Bowl Turning Demonstration

Mike Josiah provided an information-packed bowl turning demonstration. Beyond wood selection, Mike delved into the essentials body mechanics leading to precise projects. He recommended the ABC principle – Approach, Bevel, and Cut.

Mike also recommended using Stop-Loss bags to extend the life of opened cans of finish. These are available from Amazon and many woodworking supplies sites.

Thanks to Mike Josiah for a well-received session.



Mike Josiah

Upcoming Events

The next General Meeting will be held in person at the Brush Barn in Smithtown at 7 PM on April 2, 2025. An LIW Board of Directors Meeting is scheduled for 7 PM on April 21, 2025 at the Hauppauge Palace Diner, 525 Smithtown Bypass, Hauppauge, NY 11788.

The meeting adjourned at 9:05 PM.



Tom Ryan (Left) & Mike Daum

TURNER'S GUILD



BOB LERNER

The March 13th meeting was called to order by President Jim Moloney at 7:05 PM.

Announcements

Club members receive a 10% discount from Penn State Industries. Contact Jean Piotrowski to be added to the list.

Our show will take place on September 13th and 14th, with setup on the 12th.

Please work on your show projects.

The Lancaster Area Woodturners Club and John Kelsey host a live coffee hour on Zoom. It is held on Thursdays from 10:00 to 11:00 AM. All are welcome to join.

UPCOMING SYMPOSIUMS

Totally Turning in Saratoga - March 29th and 30th, 2025.

AAW Symposium in St Paul – June 12th – 15th, 2025

Mid-Atlantic Woodturning Symposium in Lancaster - Sept. 19th – 21st, 2025.

UPCOMING DEMOS

April – We will be watching a YouTube Video from the Lancaster Coffee Hour.

May – Finish the bottom of a bowl. Dealing with the foot and tenon

June – Basic spindle turning with various chisels. Hands-on demo.

TBD – We are arranging for a professional turner to do a Zoom demo.

Chapter Challenge (CC)

April – Turn a Mushroom.

SHOW AND TELL

Tony Fuoco – Cherry vase with spoked piercing.

Rob Crespolini – Displayed several stash boxes. One had a secret compartment in the base which was held in place with magnets.

Ed Piotrowski and Charlie Felsen – Sapele platter finished with Odie's Oil.

DEMO

Charlie Felsen demonstrated how to transform a mushroom from a log.

Charlie shared many mushroom pictures made from different mediums to show the wide variety of design possibilities.

Imperfect wood blanks add to the design. Bark, knots, and branch stubs are all good.

Mark the center at each end and mount in the lathe between centers.

Turn a tenon on the end that will be the base.

Mount the piece in a chuck.

Using a parting tool, mark the bottom and top of the base, the bottom and top of the ring at the bottom of the head, and the top of the head

Using a spindle gouge and scraper, Charlie shaped the head up to the top of the head ring. He left the bark on it.

Next, he undercut the bottom of the head ring.

Shaping the stem came next.

Sand and apply a finish if desired.

The final step was to part it off.

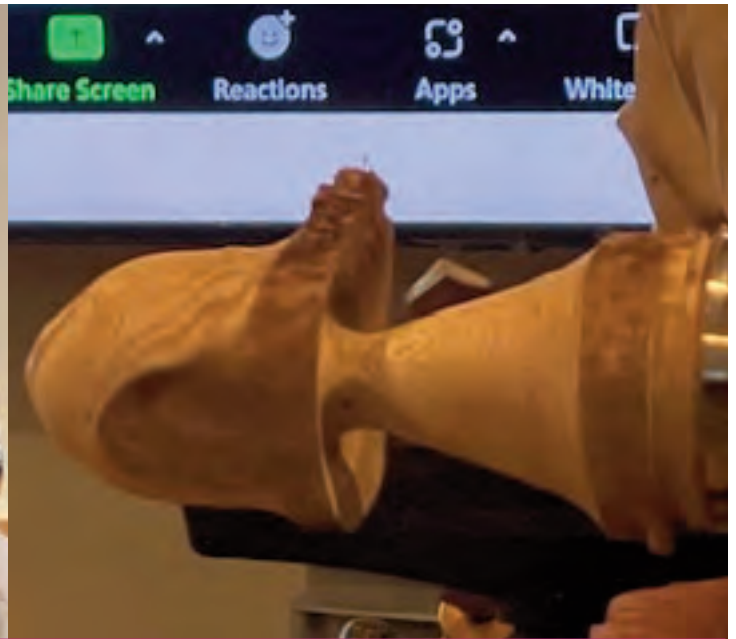
Charlie showed some pictures of mushrooms he and his friend in CA turned and beautifully decorated. Of course, many had a Grateful Dead theme.

Thank you, Charlie, for the enlightening demo. We look forward to turning some 'shrooms.

Turner's Guild photos by Bob & Patti Lerner



From left: Rob Crespolini; Rob's bottom tag learned from the Tech SIG; Tony Fuoco



Top left: Charlie Felsen starting the mushroom demo, mounting the blank; Top right: Shaping the 'shroom, Left: The completed 'shroom.



Right: Ed Piotrowski and Charlie Felsen teamed up to turn this platter.

LICFM



BOB WOOD

SHOW AND TELL started the March 11th meeting. Tom Ryan showed a box joint jig using the plans he obtained from Norm Bald. The plans were in *Shop Tips*. Gary Mayhew had a small sharpening tool called “Happy Sharpening.” The manufacturer is Select Tool.

PRESENTATION The guest speaker was Bob Schoendorf. Bob said for basic skills, cutting boards are fine, but next, legs must be attached. Bob said he rebuilt his house in 2018. He rented a two-car garage in Northport. Bob mentioned that the kitchen has just one hanging cabinet.

Bob discussed milling and began the conversation by stating that “wood is wood” and it will stress. Milling gives us the freedom to create any dimension we want, including square and flat surfaces. Bob suggested using Anchor Seal for the ends of the piece, which will evenly distribute any moisture. Bob uses a moisture meter. Getting kiln-dried wood is key. Hemlock is “crappy.” Commercial kiln drying is a precise and scientific process. For example, managing how the wood is stacked. Bob uses Roberts Plywood, which has good moisture content. Bob presented a piece of rough-sawn lumber, followed by a piece of milled lumber. Using a spiral head jointer, Bob flattens the face first and then the edge. In reality, Jim Hennefield added that these are the only true references. The other two sides are finished with a table saw and planer. Bob commented that a six to eight-inch jointer should suffice.

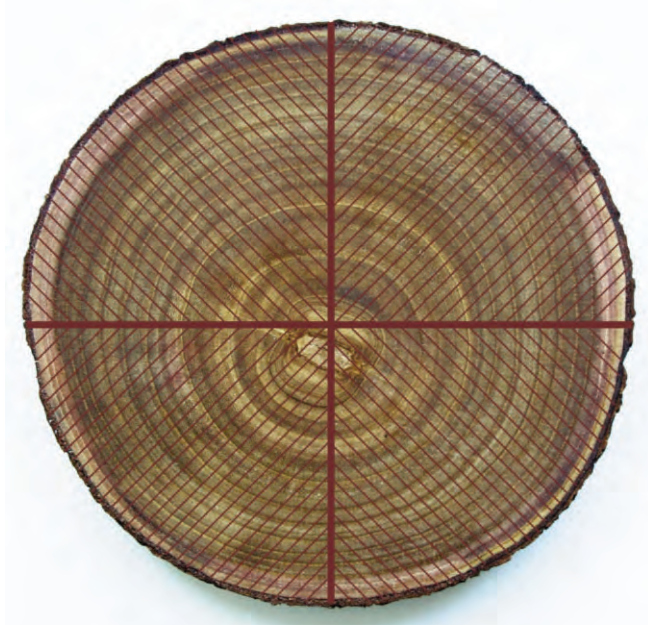


Bob brought up the different log cuts - plain-sawn, quarter-sawn, rift-sawn, and live-sawn.

For finishing, Bob uses water-based products. He sprays both finishes and paints. Bob said users must be patient with finishes and give them time to cure and dry. For water-based finishes, allow them to dry for at least a week. For chairs, Bob uses oil-based finishes, especially on the armrests. When painting, do not prime if the grain is to show. Fumed White Oak appears to be stained. The white oak is placed in a tent with ammonia, and the fumes



Plain sawn



Quarter sawn

color the wood. Bob avoids Minwax.

Bob made his kitchen cabinets out of white oak and a door out of white pine, using tongue-and-groove joinery. The door was moisture-tested for good edge joining. Bob only paints maple. For breadboard ends, Bob uses mortise-and-tenon joinery. Bob reminded the audience that “wood always moves.” Bob’s cutting boards are made of white oak.

For finishes and hardware, Bob recommended Long Island Laminates. Bob made a Jigsaw Puzzle Table and used Soss Hinges, which require a special jig.

Bob uses curved cauls when clamping boards together. The curve should have a slight crown in the middle and be clamped on the ends.

For curved profiles, Bob bends quarter-inch plywood, which is glued and vacuum-pressed around a form. Roberts Plywood has poplar for bending. For a curved back on a chair, one-eighth-inch plywood is used, again with a vacuum press or bag.

For upholstery furniture, Bob utilizes white pine.

The concluding statement was “Dry and Mill Correctly.”



Rift sawn

SSOW



PHOTOS BY PATTI & BOB LERNER

President Patti Lerner called the March 20th meeting to order at 7:10 PM.

ANNOUNCEMENT Please, continue working on the Mother's Day flowers for the April meeting. We emailed sample patterns. If you need patterns, let Bob Lerner know. Try to paint some of the flowers ahead of time, if possible. You can make the base from a dark wood to avoid painting it.

UPCOMING MEETINGS

April – Paint Mother's Day flowers - All

May - Lathe Art – Ed Piotrowski and Charlie Felsen

June, July – TBD

August – Assemble toys for the show

TBD – Pyrography

TBD - Airbrush Painting (we are looking for a presenter)

TBD - Picture Frames - Alain Tiercy

TBD - Cutting Puzzles - Jack Curio

There is considerable interest in airbrushing. If anyone knows someone who could conduct a SIG demo or workshop, please contact Patti Lerner.



Joe Pascucci



Rolf Buettenmuller

SHOW AND TELL

Joe Pascucci brought in several holiday ornaments he had test-cut for the SS magazine. He then donated them to the SIG show ornament sale.

Jack Curio showed a base he made for the Mother's Day flowers.

Rolf Buettenmuller showed an Intarsia bird on a branch and 12 flowers he made for our Mother's Day donation.

SHOW

The show will be held at the Cradle of Aviation Museum on Sept 13th and 14th, with setup on the 12th.

We are planning to do a Judy Gale Roberts Intarsia tribute display on the center wall. Steve Gazes spoke to Judy's husband. He is sending a box of items for the show, including an intarsia piece to be used in the raffle.

We will do an ornament sale instead of the Christmas tree raffle. The ornaments will be displayed on a tree with a rotating base.

The magazine projects will be displayed on a table on the show floor, rather than in the SIG demo area. They can be from any issue, but should lean towards Fall, Halloween, and Thanksgiving.

RAFFLE Gee Savoie was the winner.

PRESENTATION

Jean Piotrowski demonstrated acrylic painting techniques that can be used to decorate flowers.

Some of the highlights presented were:

- Basecoat the wood with watered-down paint. Use the same or a similar color to what you will be applying.
- Lightly wet the coated surface from a spray bottle containing water and one drop of Dawn blue dish detergent.
- Define the petals using the 2-stroke technique. Load the brush with two colors. One dark color on one edge and one light color on the other edge. Then, sweep the brush across the petal. Repeat for each petal.
- Jean showed a Pilot Frixion ball marker that can draw on your work and be erased with a heat gun. This is useful if you want to remove layout lines.
- If your flower does not have distinct petals, you can use a broad, flat brush with two colors, one on each edge, to create them. Sweep the brush from the center to the outside edge on a gentle arc. Repeat for the desired number of petals.
- To make polka dots, use the end of a brush handle that has a flat surface. Dip the handle in the paint and apply the dots to your flower.
- Golden Artist Colors Paints has a website (goldenartistcolors.com) with a paint mixer app. You can select a color and the app will show you how to mix it. It specifies the colors and ratios needed.
- Jean uses clear Krylon 1311 to protect her painted pieces.
- Dry brushing is a technique where you use a stiff dry brush, apply a small amount of paint to it, and then blot most of it off. Apply the paint to your surface.



Jack Curio



Pilot Frixion
Marker

- You can use a wood burner to create veining on leaves and also do stippling.

Jean demonstrated these techniques on several different styles of flowers. You can see some samples of them in the pictures below. She brought in two gorgeous pieces that she painted. One was a small tabletop cabinet; the other was a stool. They highlighted her immense talent! I apologize for forgetting to take pictures of them to include in the newsletter.

We all learned many new and fun painting techniques. Thank you, Jean, for sharing them with us. The SIG members are ready to have some fun and to paint some beautiful flowers.



Jean Piotrowski demonstrating flower painting techniques



LOCK, STOCK & DARYL**BEN NAWRATH, MICHAEL
MITTLEMAN & DARYL ROSENBLATT****Contributor:** Daryl Rosenblatt**Website:** <https://www.youtube.com/watch?v=yhoBmQiv9Dg>**Presenter/Author:** John Malecki**Title:** I Build 3 Cutting Boards-5 Min vs. 5 Hour vs. 5 Day / 34:13

Description: I'm waiting for Gordon Ramsay to pop out and start yelling at this guy (he won't because Malecki is an ex-NFL offensive lineman). It's almost like a cooking show with deadlines; only you can see some techniques. If I had to pick a favorite, it's the 5 minute one for several reasons:

Frank Klausz called for a cutting board challenge for one of our Sports Plus shows (so over 20 years ago), and the one he liked best was Joe Pascucci's junior high school project. In Frank's very expert judgment, a cutting board should be uncomplicated since you are only supposed to cut on it (meaning I lost a ribbon Ernie Conover wanted to give me, not that I remember this at all).

I like to cook, and I've even studied in a restaurant school (hint, you can make more in woodworking, all you need to know). My cutting boards are all either big plastic ones I've gotten at Restaurant Depot or ones I've made myself out of cherry: no inlay, no effects, just wood. When I need to do precision cutting or slicing, the last thing I want is an illusion to get in my way; it adds more crevices for bacteria to creep in.

That said, it's a fun video. Have a good time.

Contributor: Ben Nawrath**Video:** <https://youtu.be/oZNNj2MJTEE?si=nKMo0DScfMgU7srk>**Presenter:** Jack Mack Woodturning**Title:** I Turned Giant Jenga!! / 14:36

Description: This is a test—a test for you and a test for me. At the show this fall, the answer will be revealed! I really like the idea of this project. Make a project out of something we've all seen before. Some guys make stuff from colored pencils; in this case, it's Jenga! It just seems so obvious, but I've never seen this before. The result is almost like a segmented turning. Simple, but quite striking. So, come showtime, we'll see how many read this column, and we'll see if I actually find time to do this!

Contributor: Mike Mittleman

Website: [Scary sharp chisels using drill press and an inexpensive jig](#)

Presenter/Author: House Doctor Ray

Title: Scary sharp chisels using drill press and an inexpensive jig / 10:34

Description: Which woodworker doesn't like (need, actually) razor-sharp chisels and plane irons? The amount of material on sharpening available through YouTube videos, books, articles, and other media is overwhelming. The methods used to achieve a keen edge are also numerous – Arkansas and Japanese stones, diamond stones, sandpaper, blade guides to ensure optimum blade geometry, and various machines used to speed up and refine the process. The competing methods each have their die-hard adherents.

On the other hand, many, if not most, woodworkers do not look forward to sharpening sessions. Bluntly, the chore can be tedious and require significant time to achieve the sought-after keen edge. And the equipment can be pricey. Hence, these factors spiked interest in the video under review.

The video is an evaluation of a single sharpening solution available from Mike Taylor at Taytools. The video appears to be an infomercial for the Taytools sharpening system. Yet, it conveys a great deal of information. The sharpening results are achieved quickly and relatively inexpensively. The system is only for woodworkers with access to a drill press.

For those of us seeking alternatives to our current sharpening methods, this video is a must-see.

Only A Fool Will Try This!

1	2	3	4	5	6
7					
8					
9					
10					
11					

Clues

Across

- 1. Used in baking powders and as an antacid
- 7. Summer cooler
- 8. Some mouths
- 9. Kind of case
- 10. Sends away
- 11. Modify

Down

- 1. Auction competitor
- 2. Mountaineer's tool
- 3. Member of a Boston team
- 4. Fifth-century scourge
- 5. Plunders
- 6. Lowest of low

4	9	6	2	8	3	7	5	1
5	8	2	1	7	4	3	9	6
3	1	7	5	9	6	4	2	8
6	5	4	8	3	9	1	7	2
2	3	9	4	1	7	6	8	5
8	7	1	6	2	5	9	3	4
9	2	5	7	4	1	8	6	3
7	4	8	3	6	2	5	1	9
1	6	3	9	5	8	2	4	7

Solution to March