

THE Woodrack

May 2025



LISA DELIVERS THEIR ANNUAL MOTHER'S DAY FLOWERS

LIW BOARD OF DIRECTORS

<i>President</i>	Mike Daum
<i>Vice President</i>	Corey Tighe
<i>Secretary</i>	Michael R. Mittleman
<i>Treasurer</i>	Steve Fulgoni
<i>Trustees</i>	Robert DeMarco
	Ed Piotrowski
<i>Membership</i>	Steve Kelman
<i>LICFM SIG President</i>	Ben Nawrath
<i>Turner's Guild SIG President</i>	Jim Moloney
<i>LISA SIG President</i>	Patti Lerner
<i>SSOW SIG President</i>	Frank Napoli
<i>Tech SIG President</i>	Brian Monks
<hr/>	
<i>Newsletter Editor</i>	Daryl Rosenblatt
<i>Associate Editor</i>	Michael R. Mittleman
<i>Website</i>	Jim Moloney
<i>Show Chair</i>	Bob Lerner
<i>Raffles</i>	Ed Piotrowski
<i>Refreshments</i>	Jean Piotrowski
	Charlie Felsen
<i>Audio/Video</i>	Jim Moloney
<i>Programs</i>	Corey Tighe
<i>Photographer</i>	Joe DiCristina
	Jim Moloney

THIS MONTH:**SECRETARY'S NOTES****TURNER'S GUILD****LICFM****LISA****TRAVELS WITH CHARLIE****LOCK, STOCK & DARYL****PUZZLE****SECRETARY'S
NOTES****MICHAEL
MITTLEMAN**

DATE AND TIME MEETING CALLED TO ORDER: 4/2/2025, 7:15 PM

PRESIDING OFFICER: Mike Daum, LIW President.

ANNOUNCEMENTS AND UPDATES

Current status of the Canine Companions project: Mike Mittleman reported on the progress made to date. Drawer boxes and pedestals have been completed. Fronts need to be cut and laminated. Work on the tops has not yet started. Mike called out and thanked the LIW volunteers and offered special recognition for the contributions made by LIW VP Corey Tighe.

Collection of LIW dues for 2025 continues. The cost remains \$75 for general membership and \$20 apiece for family members over 18.

GUESTS PRESENT None

NEW MEMBERS

Names/Town: Dan Guido resides in the Williston Park area. He first learned about the LIW by attending last year's show. Dan makes furniture and enjoys wood carving. Welcome, Dan. Be sure to check out the LIW Special Interest Groups.

TREASURER'S REPORT

Steve Fulgoni, Treasurer, indicated that our group is in good financial shape and suggested there are sufficient funds to support workshops and/or paid speakers.

MEMBERSHIP REPORT

Steve Kelman, Membership Director, reported that all members are current with their 2025 dues. The membership count remains essentially steady.

OTHER BUSINESS

LICFM Meeting, Ben Nawrath, SIG Pres., 4/8/2025. TBD. LICFM will meet at the Brush Barn in Smithtown, starting at 7 PM.

LIWG Meeting, Jim Moloney, SIG Pres., 4/10/2025. The

The Woodrack

Volume 34 Number 5

Next meeting
Wednesday May 7th 7 pm
Brush Barn

Turners will watch a Woodturners Coffee Hour video and discuss the featured turned items. The meeting is at the Kings Park K of C and starts at 7 PM.

Wood Tech Meeting, Brian Monks, SIG Pres., - No info.

LISA Meeting, Patti Lerner, SIG Pres., 4/17/2025. The scrollers will be painting and packaging the Mother's Day flowers to be donated to a local nursing home. The meeting is at the Kings Park K of C and starts at 7 PM.

SSOW Meeting, Frank Napoli, SIG Pres., 4/24/2025. Open individual carving. Meeting location: The Woodturning Store Warehouse: 81A E Jefryn Blvd, Deer Park, NY 11729. Time 11A – 1P.

Toys Meeting, Larry Wagner, Chair, 4/12/2025. The meetings are at 12 Hamilton Lane, Huntington, NY, starting at 9:00 AM on 4/16/2025, and starting at 6:30 PM.

SHOW AND TELL

Jim Hennefield showed his work with dovetail joints and added that challenges can happen even after 40+ years of experience.

Tom Ryan displayed a cutting board with a nifty piano keyboard design.

Mike Josiah turned two bowls of different designs. Both pieces had exquisite epoxy finishes.

Jim Tauby presented a pistol-grip dovetail saw. Jim cut and shaped the grip. He said the sanding needed for final shaping was extensive.

DRAWING Joe Pascucci won (again)! Congratulations, Joe.

PRESENTATION “RJ” Kasten, owner of the Dynamite Tools Company (DTC).

RJ offered a dynamic presentation about his company, a local, long-time “go-to” source for power tools, hand tools, and repairs. They have a huge onsite inventory, provide web sales (<https://dynamitetool.com>), and offer next-day delivery. They are located at 1551 Smithtown Avenue, Bohemia.

RJ and his partners have expanded the company's offerings. He said Dynamite Tools will be at this year's Annual Show, September 13 – 14, 2025. RJ, thank you for the energetic, informative presentation.

UPCOMING EVENTS

The next General Meeting will be held in person at the Brush Barn in Smithtown at 7 PM on May 7, 2025.

An LIW Board of Directors Meeting is scheduled for 7 PM on April 21, 2025, at the Hauppauge Palace Diner, 525 Smithtown Bypass, Hauppauge, NY 11788.

MEETING ADJOURNMENT TIME:
8:50 PM



RJ Kasten

TURNER'S GUILD



BOB LERNER

The April 10th meeting was called to order by the President, Jim Moloney, at 7:05 PM.

ANNOUNCEMENTS The club members get a 10% discount from Penn State Industries. Contact Jean Piotrowski to be added to the list.

Our show will be Sept 13th and 14th, with setup on the 12th. Please work on your show projects.

UPCOMING SYMPOSIUMS

AAW Symposium in St Paul – June 12th – 15th, 2025

Mid Atlantic Woodturning Symposium in Lancaster, PA - Sept. 19th – 21st, 2025.

UPCOMING DEMOS

May – Finish the bottom of a bowl. Dealing with the foot and tenon.

June – Basic spindle turning with various chisels. Hands-on demo.

TBD – We are arranging for a professional turner to do a Zoom demo.

CHAPTER CHALLENGE (CC)

May – Embellish something.

SHOW AND TELL

Jim Moloney – Two mushrooms. (CC)

Joe Pascucci – A dozen shrooms, some finished with flame texturing, others with iridescent paint. The wood used was cherry and cedar. (CC)

Brian Roughley – Three mushrooms. A fourth exploded while turning and is now a bowl. (CC)

Doug Bartow – A mushroom turned from wet cedar and finished with walrus oil. (CC).

Barry Saltsberg – A mushroom-lidded box from black locust finished with Low Lustre Tung Oil. (CC)

Bob Lerner – One mushroom made from Rose of Sharon. (CC)

Mike Josiah – One mushroom. Made from maple, with the cracks filled with malachite. (CC)

RAFFLE The winner was Rob Crespolini.

DEMO There was no demo. We watched an episode of the Lancaster Area Woodturners Coffee Hour.



Top: Barry Saltsberg; Bob Lerner
Bottom: Brian Roughley; Doug Bartow

Turner's Guildphotos by Bob & Patti Lerner





Top: Joe Pascucci
Bottom: Mike Josiah



LICFM



BOB WOOD

ANNOUNCEMENTS Larry Wagner began the April 8th meeting by letting members know that the toy-making meeting will be on Wednesday, April 18th, at 6:30 at his shop. Bill Leonhardt made blocks for children and boxed the blocks with dovetails that covered the rabbits in the boxes.

PRESENTATION Dovetailing was the topic of the evening, co-presented by Jim Hennefield and Brian Monks.

Jim began by saying he has the Keller Dovetail Jig, which is used with a router, but has made dovetails with hand tools. Jim quoted Steve Price - "Don't be judgmental." Steve meant that one can get as much satisfaction from a machine-made or hand-cut dovetail. Jim continued by mentioning that a Lancaster, PA, teacher uses a specially-made table saw blade to create the sockets on a dovetail. Jim said the dovetail is just a mortise and tenon with angles. The saw cut must be perpendicular.

Another method was to use a band saw utilizing a Wood Slicer blade, which has no set. Jim made a jig to use with the bandsaw cuts. Jim referenced [Fine Woodworking #311](#) from which he made the jig.

Another aspect of cutting dovetails was to make use of painters' tape. To get the correct reference line, use the tape on the end of the board and then score and cut the tape with a marking gauge, which measures the thickness of the board. The cut part of the tape is where to cut. Clean out the waste, which should be about twenty percent. Both Jim and Brian emphasized cutting to the waste.

Pins should be cut by hand. Cut half pins on the ends with a table saw, dovetail saw, or chisel, which takes more time.

Jim suggested taping all baselines. If they are off, retape. Trace out all the Vs. Use a flashlight and a knife to see where the lines should be. The tape protects the wood underneath. After establishing the lines, Jim used a Bridge City Dozuki Saw to make the cuts. Jim emphasized that we mark all the lines correctly.

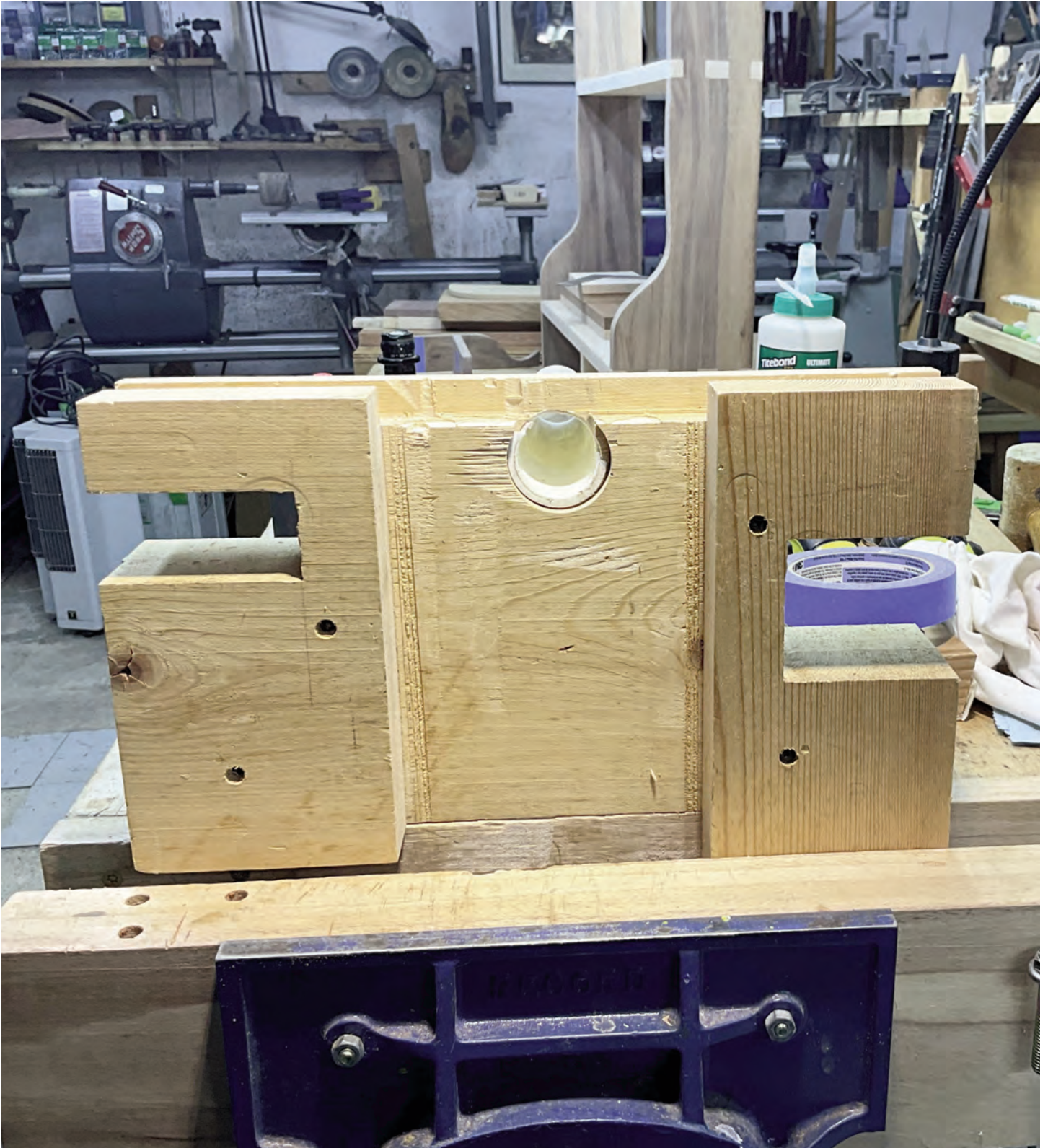
In [Fine Woodworking #219](#), there is a helpful article entitled "Half Blind Dovetails in Half the Time," from which Jim made another jig to be used with a router and an upcut spiral bit. Jim said a table saw would make for a straight, clean line on the bottom. When cutting, start at the appropriate angle and then cut perpendicular.

Brian Monks began by saying it takes time and practice, and some aids will get one to the next level.

Brian has a table saw blade ground to ten degrees and a jig to match the ten-degree saw blade. One can use a fret saw or a chisel to clean the waste. Brian recommends sticking with one method that works for you. It is a process that should be followed step by step. Be consistent. Dovetails are merely transferring one geometric pattern to another. Brian likes Rob Cosman's marking knife - .019 inches thick, which is the thickness of his handsaw blade. The knife provides a crisp line to cut to. Katz Moses makes a clear, durable plastic sawing guide. "Cut to the waste." Brian has a jig for aligning the boards when transferring the patterns. Using a machine is not sacrilegious. Whatever method works, just practice, practice, practice. Brian uses Japanese pull saws and recommends good chisels. Start with through dovetails. Using a router will help. Using 3/8-inch wood is ideal, and practice on poplar. Brian utilizes Chuck Bender's system of keeping the correct orientation of the front, back, and sides. Line up the front and

back together, then draw a pyramid or triangle across both mating pieces with the outside of the drawing facing the outside of the box or drawer. This method ensures the correct positioning of the pieces, especially when making the dovetails. These references are drawn on both sides and the front and back, thus providing four half-triangles. The last comment was that one advantage of dovetails is the mechanical interconnection.

The presentation was quite thorough and removed the mystique of dovetailing.



LISA



BOB LERNER

President Patti Lerner called the meeting April 17th to order at 7:10 PM.

ANNOUNCEMENTS Please, continue working on your show projects and ornaments.

UPCOMING MEETINGS

May - Lathe Art – Ed Piotrowski and Charlie Felsen.

August – Show toy assembly.

TBD – Pyrography

TBD - Airbrush Painting (we are looking for a presenter)

TBD - Picture Frames - Alain Tiercy

TBD - Cutting Puzzles - Jack Curio

There is a lot of interest in airbrushing. If anyone knows someone who could do a SIG demo or a workshop, please contact Patti Lerner.

SHOW AND TELL Rolf Beuttenmuller – Showed an intarsia bird, a Judy Gale Roberts fretwork fish, and a 3D bird with a very long tail.

SHOW The show will be held at the Cradle of Aviation Museum on Sept 13th and 14th, with setup on the 12th.

We plan to display a Judy Gale Roberts Intarsia tribute on the center wall.

We will do an ornament sale instead of the Christmas tree raffle. The ornaments will be displayed on a tree with a rotating base.

The magazine projects will be placed on a table on the show floor instead of in the SIG demo area. They can be from any issue, but should lean towards Fall, Halloween, and Thanksgiving.

PRESENTATION

There was no presentation this month.

We painted and bagged the Mother's Day flowers. We will, once again, donate them to the White Oaks Rehabilitation and Nursing Center before Mother's Day. The total for this year is 166 flowers. A big thank you to all who participated!

Editor's Note: Photos and thank you note from White Oaks regarding the Mother's Day flowers are included in this section. Thank you to Patti and Bob Lerner for spearheading this annual event.



Rolf, Rolf & more Rolf!





Thank you, thank you, thank you so very much for the beautifully carved and painted flowers

I know they will bring such joy to the ladies on Mother's Day and beyond.

I will definitely post closer to Mother's Day.

Paula Ann Calvagno

Recreation Department

White Oaks Rehabilitation and Nursing Center

8565 Jericho Turnpike

Woodbury, New York 11797



LOCK, STOCK & DARYL

BEN NAWRATH, MICHAEL
MITTLEMAN & DARYL ROSENBLATT**Contributor:** Daryl Rosenblatt**Website:** <https://www.youtube.com/watch?v=T5fxTUAicls>**Presenter/Author:** ExtremeWoodworker (Steve)**Title:** Shaper Cutter Storage Cabinet / 30:16

Description: I've reviewed Steve's channel before, but this one, I think, takes it to the "extreme." (Pun so intended, it's wild). Steve has every major high-end power tool in the world, and I am talking about this particular episode because it always brings up the question, "When is it woodworking and when have the computers taken over?"

Marquetry: Is it still woodworking when cutting it all with a laser? Joinery: If I'm not doing any joinery because I have a Lamello machine (but you can substitute Domino, Kreg, Castle, Miller dowels, and any other number of time savers), is it still woodworking? Any of us would drool over a Martin tablesaw with the powered movement and computer controls (or would we?).

This is not meant to be a criticism of Steve here. I'm the guy who had that Felder table saw/shaper with the greatest sliding table ever; even if I no longer have it, I did for years. It's a philosophical question of what it takes to be a woodworker. I've been in woodworking shops in Asia where the shop was a shed with a few chisels. I still design furniture on pads and index cards; for all my years of computer experience, I don't want to learn SketchUp, but I might learn 3D printing.

So yes, this is a chance to see how the 1 percent sets up shop. I once asked Frank Klausz how he kept his cast iron tools so shiny. His answer was Tommy. I asked what a Tommy was, and he said, "Tommy buffs all the machine tops every Friday afternoon." So maybe Steve has a Tommy. We ALL want a Tommy. Yes, Steve is a woodworker, but I don't know how good he is. His videos always show his tools and some shop cabinets, but does he have talent? It's like me and music. If I took 20 years of piano lessons, I would play the notes, but I wouldn't produce music. There is no right or wrong answer here, I just enjoyed watching Steve and his toys.

Contributor: Ben Nawrath**Website:** <https://www.youtube.com/watch?v=Uv5SHIHp38o>and <https://youtu.be/pWExFcFc6P4?si=7SJE9Ung8tXpw7bb>**Presenter/Author:** Stumpy Nubs (James Hamilton)**Title:** Clever Trick! - Fixing GARBAGE Home Depot Lumber / 7:22**Title:** Clever Idea Makes Wood Tables Last FOREVER / 11:58

Description: Ok, hear me out... I chose these videos for the lessons baked into them, not because I want everyone to get wood from Home Depot! The videos are *really* great explanations of the different parts of a log. If you've ever wondered about grain movement, different types of board sawing, and maybe even how to make stuff from cheap wood, these videos are for you. Plus, it's Stumpy. Everyone loves this guy, even Mike Mittleman! Bonus is the father/son project they're working on. I'll support that no matter where you source the wood!

Contributor: Mike Mittleman

Website: <https://www.youtube.com/shorts/SaCZr8YfSvI?t=13&feature=share>

Presenter/Author: Stumpy Nubs (James Hamilton)

Title: Microjig Fitfinder jig / 1:23

Description: Which woodworker hasn't experienced the need to find exactly one half the thickness of a board or transfer that measurement to the cutting height to set blade or bit? The Microjig folks have an inexpensive solution (about \$35) offering great precision.

The device is based on the Pythagorean Theorem, i.e., $A^2 + B^2 = C^2$, thereby assuring mathematical precision. Rest the base and the workpiece on a flat surface, then one arm of the jig is placed on top of the workpiece, while a second arm reliably marks exactly one-half its height.

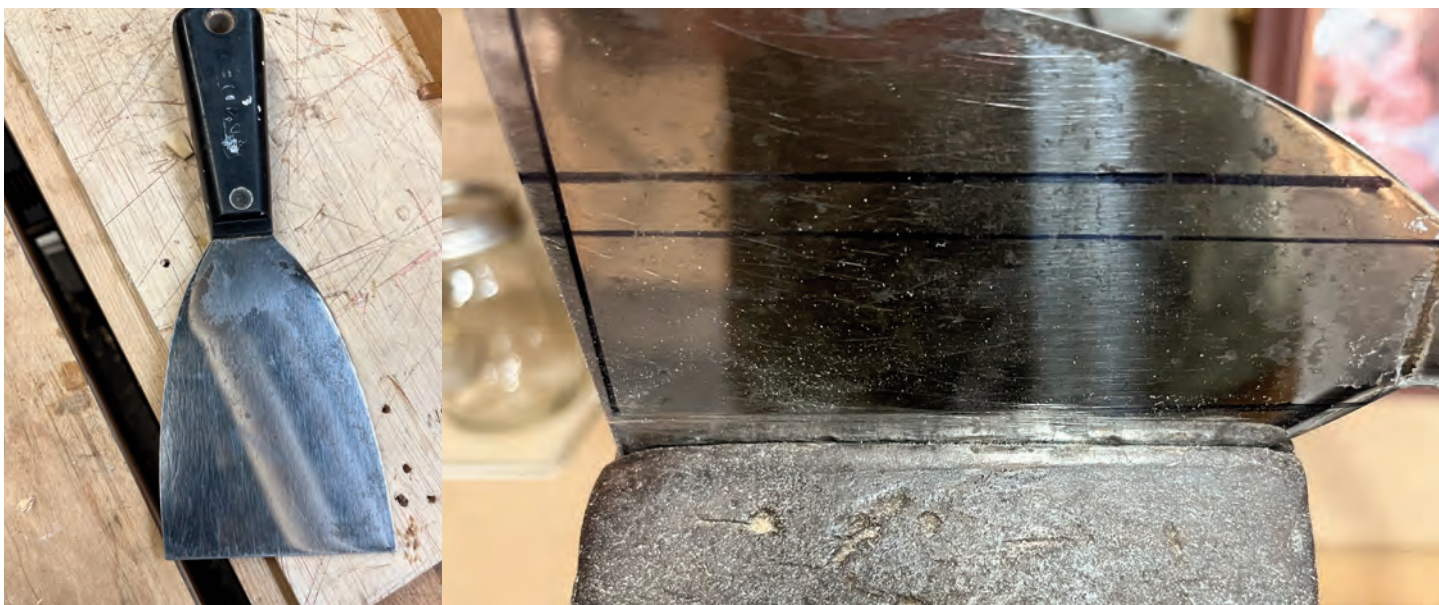
Here is an interesting, useful, and inexpensive tool to add to your toolbox.

TRAVELS WITH CHARLIE
Half Blind Dovetails



CHARLIE JAMES

I use one of these to cut into the corners of half blind dovetails. Just place it in the cut and hammer down to the shoulder line. I scored a thin piece of metal, in this case, a trowel. I put the metal in a vise and hammer it back and forth a few times until it breaks. I form a tang on the end the same way. There are two ways to make it. I cut some scrap wood and turn it, then drill small holes into the turned handle, remove the waste, and push the tang in. Cut a piece of wood in half, trace the tang, and remove the waste. Gorilla Glue holds the metal in. I shape it on my grinder and finish sharpening it on a stone. The tip is angled forward on the bottom to reach the extreme corner. Since I started using these half blind dovetails go much smoother. No need for a lathe, these could be made from square stock and formed to fit comfortably in your hand.





PUZZLE

MICHAEL R. MITTLEMAN

It's May Flowers

How to play: Complete the numerical grid so that every row, column, and 3 x 3 box contains all digits from 1 to 9.

		6	5	8				
				3	2	5	4	
7						1		8
				7	3			
	1	7				9	6	
			9	6				
1		2						7
	8	5	3	2				
				1	4	6		

B	I	C	A	R	B
I	C	E	T	E	A
D	E	L	T	A	S
D	A	T	I	V	E
E	X	I	L	E	S
R	E	C	A	S	T

Solution to April